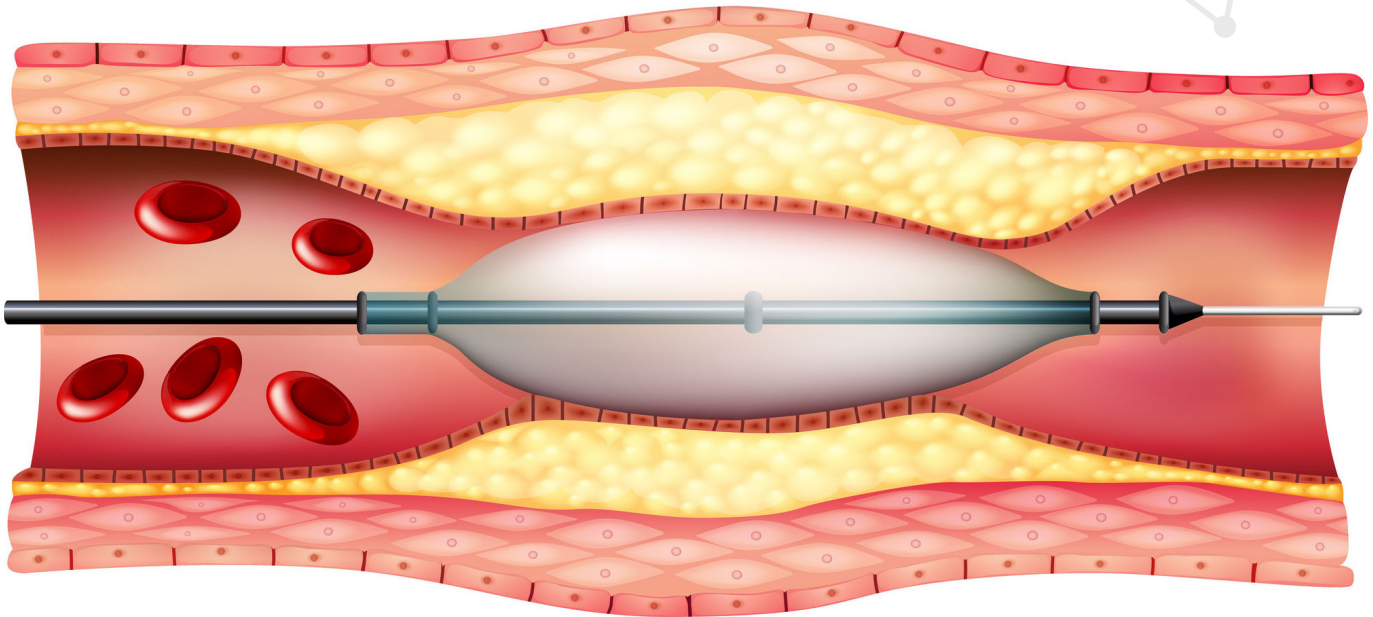


# BIOMEDICAL DEVICES CERTIFICATE



Preparing students for entry-level jobs at biomedical devices companies in Silicon Valley

## **COURSES** (no prerequisites)

**Engr83A: Introduction to Biomedical Engineering**  
(5 units) Fall Quarter

**Engr83B: Design & Manufacturing in the Biomedical Engineering Field**  
(5 units) Winter Quarter

**Engr83C: Introduction to Medical Device Regulations**  
(5 units) Winter Quarter

**Engr83D: Introduction to Quality Assurance**  
(5 units) Spring Quarter

**Engr6: Engineering Graphics**  
(5 units) Every Quarter

## **WHY CHOOSE FOOTHILL?**

- Affordable
- Evening & online classes
- Financial aid available

## **FOR MORE INFORMATION**

visit [foothill.edu/sli](http://foothill.edu/sli) or  
email Oxana Pantchenko at  
[pantchenkooxana@fhda.edu](mailto:pantchenkooxana@fhda.edu)