



# WELCOME

# Craft Your Path

Scholarships and make the most of your resources for multicultural communities!

June 5, 2024, Wednesday  
12:00 to 1:15 pm  
ROOM 4218

# SLI MISSION

The Science Learning Institute's mission is to advance equity and diversity in STEM at Foothill College by supporting students from underrepresented groups in their academic and career pathways in STEM and through initiatives working with faculty, within the institution, and in partnership in the community.

# SLI PROGRAMS



MESA Center and  
program activities



Guest speakers, panels,  
networking events



SLI Newsletter,  
a resource for YOU!

# AGENDA

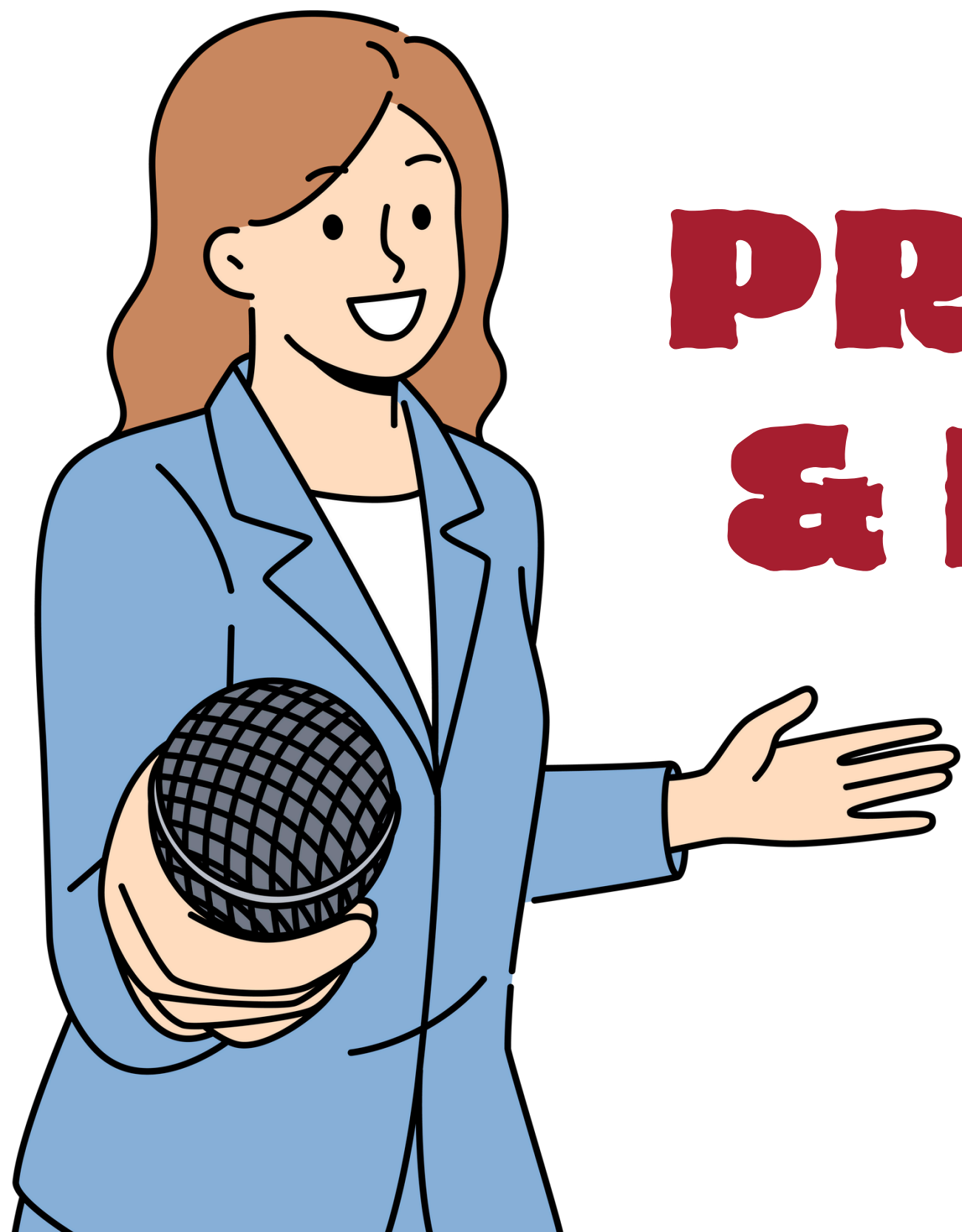
<b>12:00-12:10</b>	Check-in
<b>12:00-12:10</b>	Introductions
<b>12:00-12:10</b>	Ice breaker
<b>12:00-12:10</b>	Presentation
<b>12:00-12:10</b>	Resources
<b>12:00-12:10</b>	Closing & Questions

# ICE BREAKER



- Name
- Pronouns
- Major
- A fun fact about you
- What are you hoping to get out of this workshop?

# **SPEAKER PRESENTATIONS & EXPERIENCES**



# FATIMA SANCHEZ



My name is and I am Fatima Sanchez a first-generation college student. I am majoring in Public health and am aspiring to do research. I will be transferring to UC Santa Cruz in the fall. The STEM field is such a difficult field, especially for the Undocumented, Latinx/Hispanic, first-generation community. Foothill opened the doors for me to continue my path because I was able to find resources and peers that support me. I want my educational journey and stories to have an influence on similar communities.

# 1st Experience

## FAILING MATH40C

A collage of handwritten mathematical notes and diagrams, repeated four times across the page. The notes include:

- $\lim_{x \rightarrow 1} \frac{ctgx-2}{2\sqrt{1-x^3}}$
- $\int (x \pm a)^n dx$
- $\sum_{k=0}^{n-1} r^k$
- $A-C=B$
- $\lim_{x \rightarrow 1} \frac{ctgx-2}{2\sqrt{1-x^3}}$
- $\int (x \pm a)^n dx$
- $\sum_{k=0}^{n-1} r^k$
- $A-C=B$
- $\lim_{x \rightarrow 1} \frac{ctgx-2}{2\sqrt{1-x^3}}$
- $\int (x \pm a)^n dx$
- $\sum_{k=0}^{n-1} r^k$
- $A-C=B$

Other visible elements include:

- $y^2 = z$ ,  $S_3 = \begin{bmatrix} 10 & 0 \\ 10 & 1 \\ 00 & 1 \end{bmatrix}$
- $\pi \approx 3,1415$
- $P = r^2 \pi$
- $\Delta t = T - \frac{3a}{x}$
- $(x+y)^2 = (\frac{y}{2})^2$
- $\frac{\Delta x}{\Delta y} = \lim_{\Delta y \rightarrow 0} \frac{\Delta x + 2}{\Delta y - 1}$
- $y = \frac{\Delta x}{\Delta z}$
- $\delta x = 4 - 3y^2$
- $(x-a)^2 = x^2 + 2ax + a^2$
- $f_x = (x-y)^2$
- $y = 2x^2 + 3x$
- $\int \frac{\sqrt{x+a}}{x} dx$
- $\ln|x(\frac{a-\sqrt{x^2+a^2}}{x})| + c$
- $X_{1/2} = \frac{b \pm (a-c)}{\sqrt{2a}}$
- $e = 2,79$
- $e = \cos x + tgy$
- $\tan(2a) = \frac{2 \tan(a)}{1 - \tan^2(a)}$
- $P = \sum_{i=0}^{\infty} X_i^a$
- $y = \frac{\Delta x}{\Delta z}$
- $\ln = \sqrt{axb}$
- $\sum_{n=0}^{\infty} \frac{x^n}{n!}$
- $\sin a = \frac{b}{c}$
- $X = (y-1)^2$



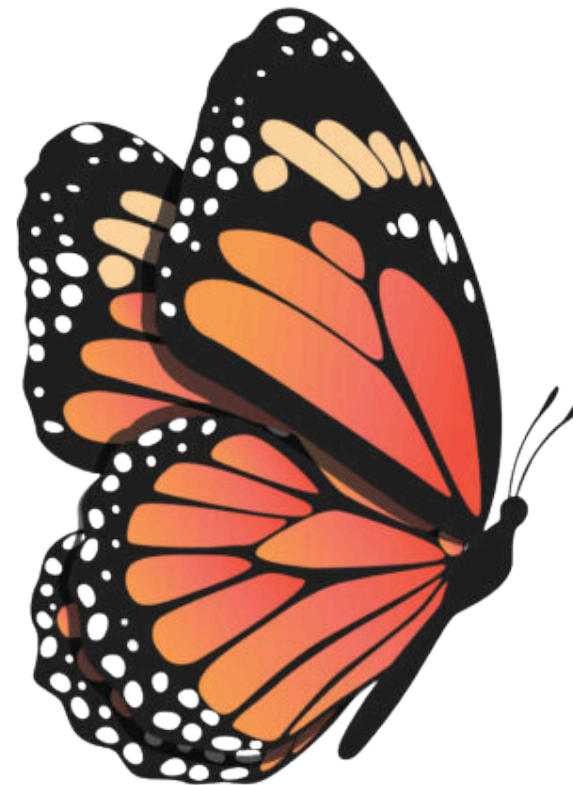
# Next Steps

Tutors &  
Desire for an  
internship






# Resources

**STEM**  
**TUTORING**  
**CENTER**








**DREAMER**  
**Success Program**

# Internships

[Foothill College STEM students] - Apply for a summer **internship** through the Science Learning Institute!  Inbox x  



**Marissa Yanez** <yanezmarissa@fhda.edu>  
to Marissa ▾

 Sat, Apr 23, 2022, 11:06 AM    

Dear Foothill College STEM student,

The [Science Learning Institute](#) at Foothill College is an institute with the mission of advancing equity and diversity in STEM by supporting students from underrepresented groups in their academic and career pathways.

This summer, we are sponsoring **28+ summer **internship** opportunities in STEM for up to 40 students** to work at tech, biotech and/or STEM research labs across Silicon Valley. Depending on the project, opportunities range from fully remote, to hybrid (in-person and remote), to fully in-person. These are **PAID **internships**** that range from **6 - 30 hours/week for 6-10 weeks** (depending on the opportunity), and in most cases do not require heavy prerequisites and/or prior coursework.

For these summer **internships**, we are prioritizing students who **have financial need** and **have not had an **internship** before!**

# Leadership

Current Program at Foothill College



# Scholarships

## Foothill APAN Scholarship

### **Description:**

This scholarship is for students who are actively involved in promoting Asian Pacific Islander issues, activities and cultural events.

### **Minimum Qualifications:**

1. At the time of the scholarship deadline, applicant must be currently enrolled at Foothill College, taking a minimum of 12 units per semester.
2. Applicant's cumulative Foothill GPA must be a 2.50 or higher.
3. Applicant must demonstrate student leadership and/or community service.
4. Applicant must be actively involved in promoting Asian Pacific Islander issues, activities and cultural events.

### **Supplemental Questions**

1. Please describe your involvement in promoting Asian Pacific Islander issues, activities and cultural events.

# Opportunities

## Conferences



# QUOTE

I live by two words. “Tenacity gets me where I want to go,” and “Gratitude doesn’t allow me to be angry along the way.”

- Henry Winkler, Actor

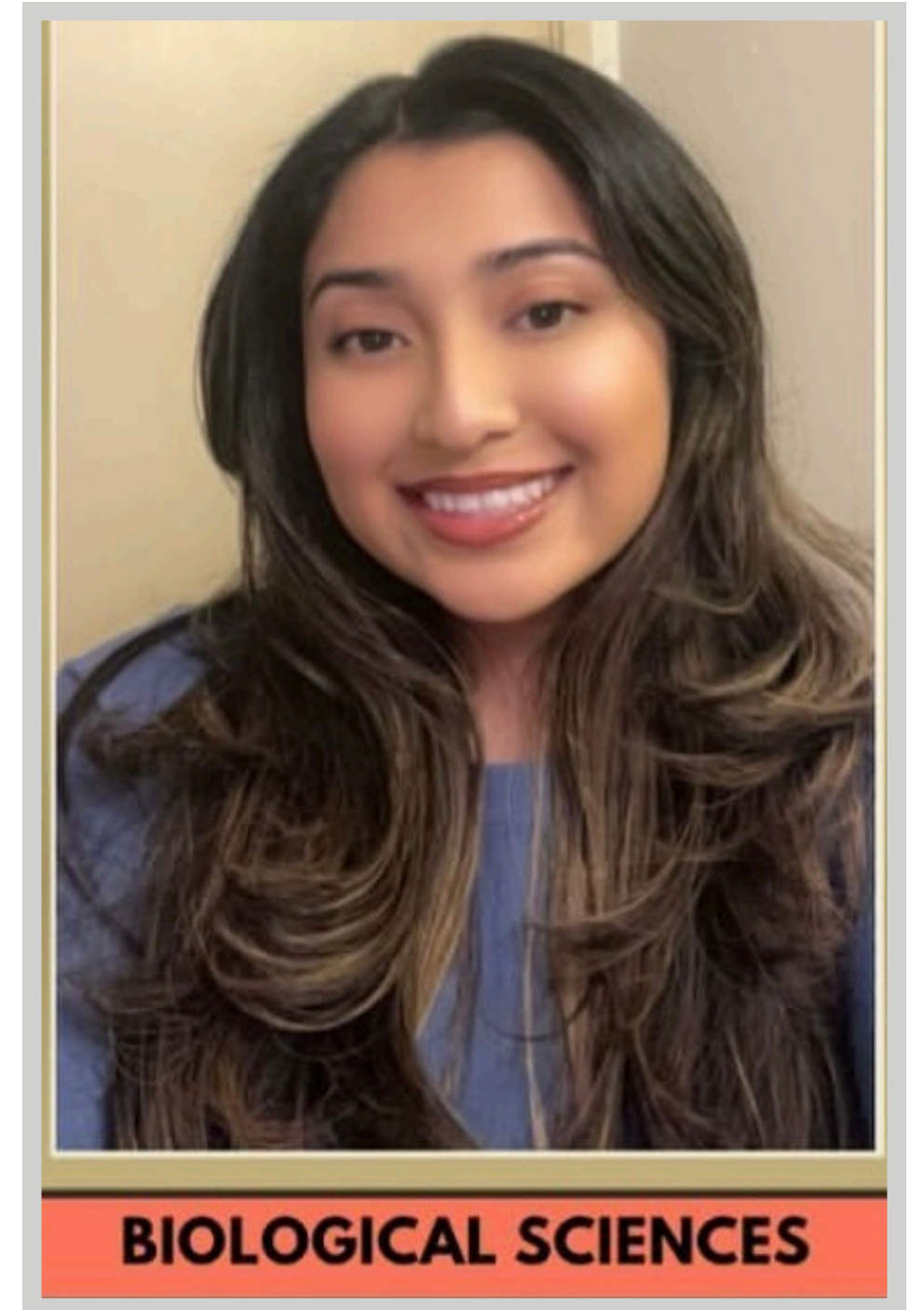
# DAISY RODRIGUEZ

My name is Daisy Rodriguez and I am a first-generation college student. I am majoring in Biological Sciences and am an aspiring surgeon. I am a third-year student at De Anza/Foothill and hope to transfer to either SJSU or UC Davis. The STEM field is such a difficult field, especially for the Undocumented, Latinx/Hispanic, first-generation community so having a community like MESA/SLI here at Foothill has been very helpful for me to continue forward with my education. I hope my story and education path can impact communities like mine.





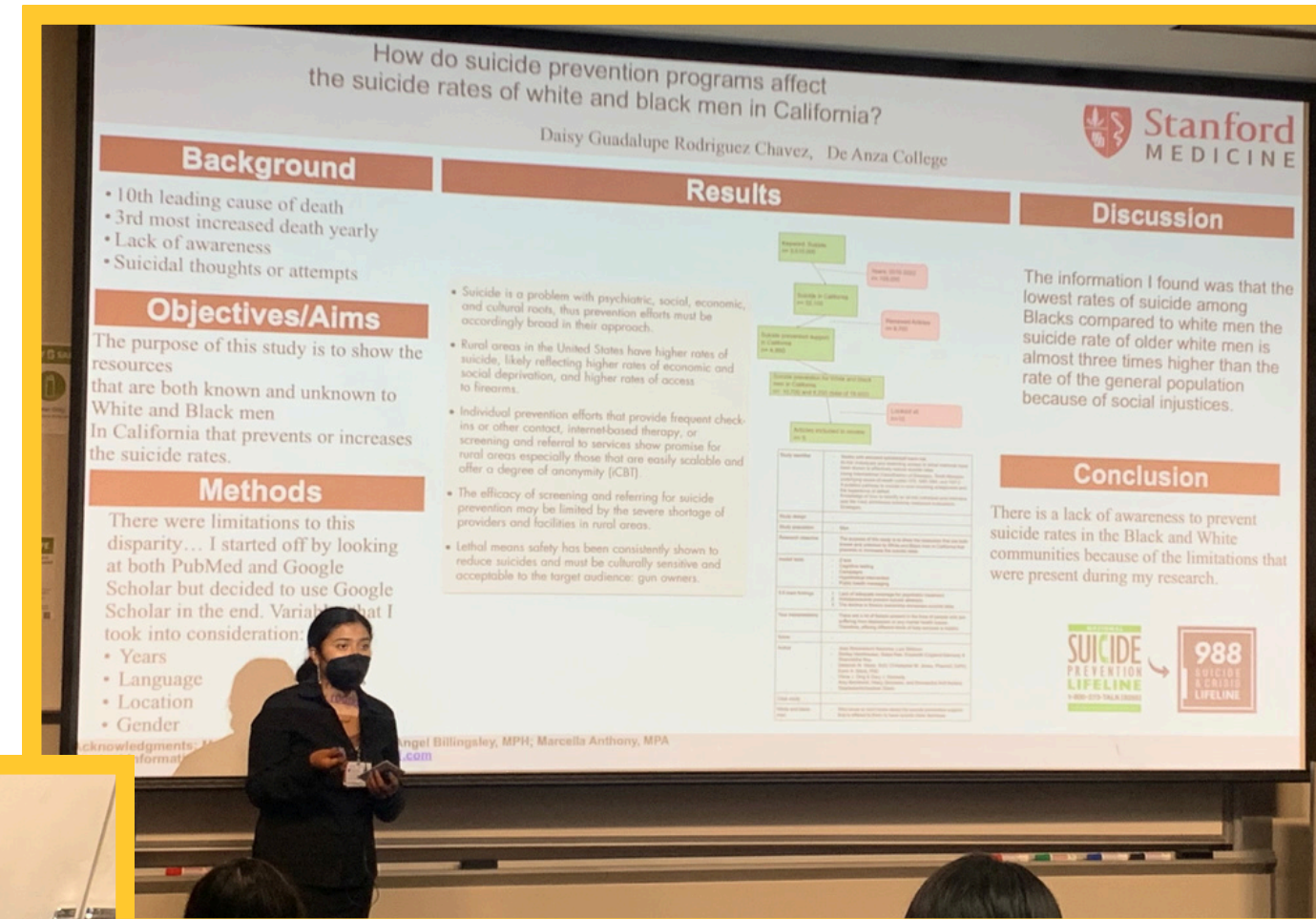
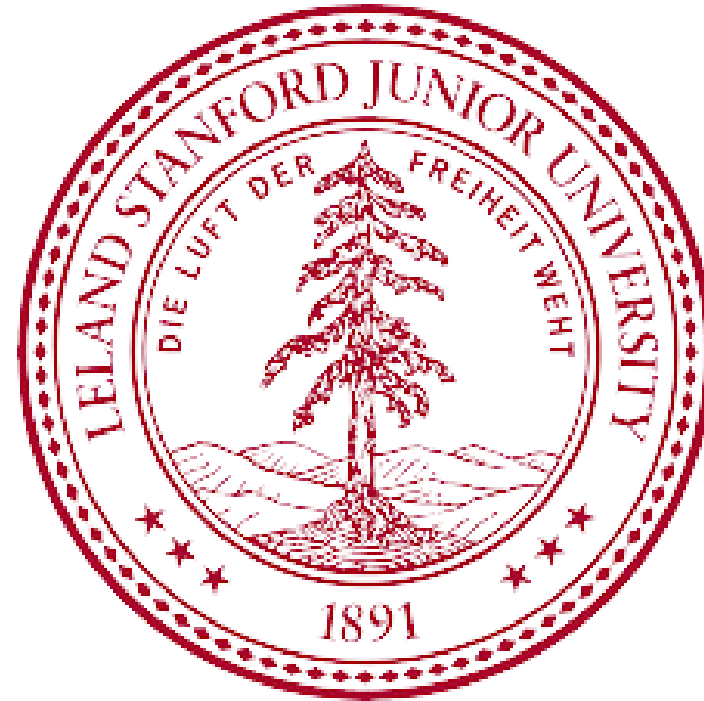
# 1st experience



**BIOLOGICAL SCIENCES**



# 1st experience



# QUOTE

“At the end of the day, we can endure much more than we think we can”

- Frida Kahlo, Mexican Painter

# External Resources

Organizations that offer scholarships:

- IIE (Institute of International Education)
- Immigrant Rising
- AAUW
- Fund For Education Abroad
- IEFA.ORG
- Education USA
- intlstudent.org
- Girlsoncampus.org
- Immigrant Rising
- Girls On Campus
- Scholarship websites to check out:
  - [www.scholistapp.com](http://www.scholistapp.com)
- Profellow (Masters)
  - [internationalstudent.com](http://internationalstudent.com)
  - Scholarship 360
  - Going Merry



 **SLI**  
**RESOURCES**  
**& MORE!** 

# SLI Website

## SCIENCE LEARNING INSTITUTE

### HOME

▶ About Us

### Programs

▶ MESA @ Foothill

▶ SLI Internships

▶ SLI Events

▶ A Possible Self

### STEM Resources

▶ Elevating STEM

Past Newsletters

Scholarships

External Internships

Resume Writing

▶ STEM Center



# SLI Website

## Past Newsletters

SLI collects information on events, internships, scholarships, and other resources of value to STEM students.

[JOIN SLI'S NEWSLETTER!](#)

## Newsletter Archive

Click on each link to find previous newsletters.

### 2023-2024 Newsletters

[Spring 2024](#) ▶

[Winter 2024](#) ▶

[Summer/Fall 2023](#) ▶

## STEM Scholarships

Scholarships provide students with opportunities to attend college, advance their knowledge and skills for workforce preparedness, and help them prepare for both academic opportunities and financial challenges after transfer.

You can apply for Foothill College sponsored scholarships and scholarships offered through outside organizations.

## Tips and Strategies

### Internet Search

First, SLI is keeping a [running spreadsheet](#) of scholarship and internship opportunities and deadlines by month. This is a dynamic sheet, so bookmark it in your browser and come back from time to time.

Another good start for finding STEM internships is to do an internet search with the following key terms:

- "STEM scholarships for community college students"
- "undergraduate student scholarships in STEM"
- "STEM scholarships for x group" (x = any specific identity such as "women," "Latino/a/x," or "Black/ African American")

## External Internships

Internships are an important part of a STEM student's experience.

- You gain valuable work experience.
- You get a better idea of your own academic and professional goals.
- You network with others in the field.

Find out more about Foothill College's tips and resources related to internships at our [Internships](#) page.

## Resources for NASA Internships

We know there are those of you especially interested in internships at NASA! We are hoping to build more resources to support you in that effort.

[Past Info Session Resources](#) ▶

[Websites for NASA Internships](#) ▶


## Resources for Other STEM Internships


# SLI Newsletter

Search mail ? ⚙️ ☰

7 of 831 < >

SLI Opportunities Newsletter - Events, Internships, and more! Inbox x 🖨️ 📧

 **Science Learning Institute** <sli@foothill.ccsend.com> [Unsubscribe](#) Fri, May 31, 5:00 PM (4 days ago) ★ 😊 ↩️ ⋮  
to me ▾



**FOOTHILL COLLEGE**  
SCIENCE LEARNING INSTITUTE

## Opportunities in STEM Newsletter

<p><b>STEM Center</b> <i><a href="#">Hours and information</a></i></p>	<p><b>Spring 2024   Week 8</b> <b>May 31, 2024</b></p> <p><b>Hello Owls!</b></p> <p>Keep pushing, the end of the quarter is approaching! Check out these great events and opportunities!</p> <p><a href="#">Visit the SLI Website!</a></p> <p>Questions? Email <a href="mailto:sli.foothill@gmail.com">sli.foothill@gmail.com</a></p>
<p><b>STEM Clubs</b> <i><a href="#">Check out Foothill's STEM Clubs</a></i></p>	
<p><b>Mental Health Corner</b> <i><a href="#">Foothill Mental Health Services</a></i></p>	



# SLI Newsletter

**P**rogram   **I**nternship   **J**ob   **E**vent   **S**cholarship   **R**esource

## SLI Opportunities



### Craft Your Path

Wed, June 5  
12 – 1:15pm  
Room 4218 and on Zoom

**E** Gain tips and strategies to access resources like scholarships and internships, especially if you've never done it before. Join SLI for this informative workshop to give you a chance to "craft your path" with the huge amount of resources that are out there for YOU! Event will be on Zoom and in person.

[RSVP Here](#)

### SLI STEM T-Shirt is Available!



**E** The new **SLI STEM t-shirt** is now available for purchase. Fill out this order form and reach out to you to arrange for pick up or payment. For now, we will be selling the shirts at events and making them available for free at events and with special opportunities. But it's super cheap so get it if you won't want to wait - \$3 per shirt for students.

[Order A Shirt](#)

## Foothill Opportunities

### 2024 **Foothill** Innovation Challenge

#### The Challenge

Thurs, 5/30  
12:00 - 5:00 PM  
Dining Hall

**P** Our innovation journey is wrapping up, and we're excited to invite you to Challenge Day on Thursday, May 30th from noon to 5 PM! Stay as long as you like and see the amazing projects our students have created. Meet the six teams that will move on to the semifinals and meet industry leaders like Adrienne Pineda (Sun Road), Sara Eve Fuentes (Smart Waste Inc.), Lee Lambert (FHDA Chancellor and CEO), Wesley (novoHydrogen), and Brian Sparkes (Bay Angels). This is a great chance to learn, network, and support our innovators. We look forward to seeing you there!

[More Info Here](#)

## External Opportunities



### Stanford Physics Event

Wed, May 29th  
7:30 PM  
Stanford, Hewlett Teaching Center, Room 201

**E** John Preskill, Professor of Theoretical Physics at CalTech for his lecture on quantum computing and the entanglement frontier. Registration is not necessary for the lecture, and all are welcome.

[More Info Here](#)



### NASA Community College Aerospace Scholars

Application Deadline: Mon, June 10

**P** **NASA Community College Aerospace Scholars (NCAS)** is a series of STEM education experiences called "missions" for community college students seeking to transfer to a 4-year institution or go directly to the labor force. Info session will be held on Zoom: Wed, June 5 from 2 – 2:45pm. This is a great entry to NASA and a pathway to internships and jobs!

[Apply Here](#)

# SLI Canvas Shell

☰ SLI Resources > Modules

Home  
Modules  
Foothill Tutoring  
Search  
Foothill Zoom

Collapse All

▼ Internship Application Resources

- 📄 Internship Application Basics
- 📄 The Application
- 📄 The Resume
- 📄 The Interview
- 📄 Personal Statement/ Essay/ Cover Letter
- 📄 Wrapping Things Up



**MORE  
COMING  
SOON!**



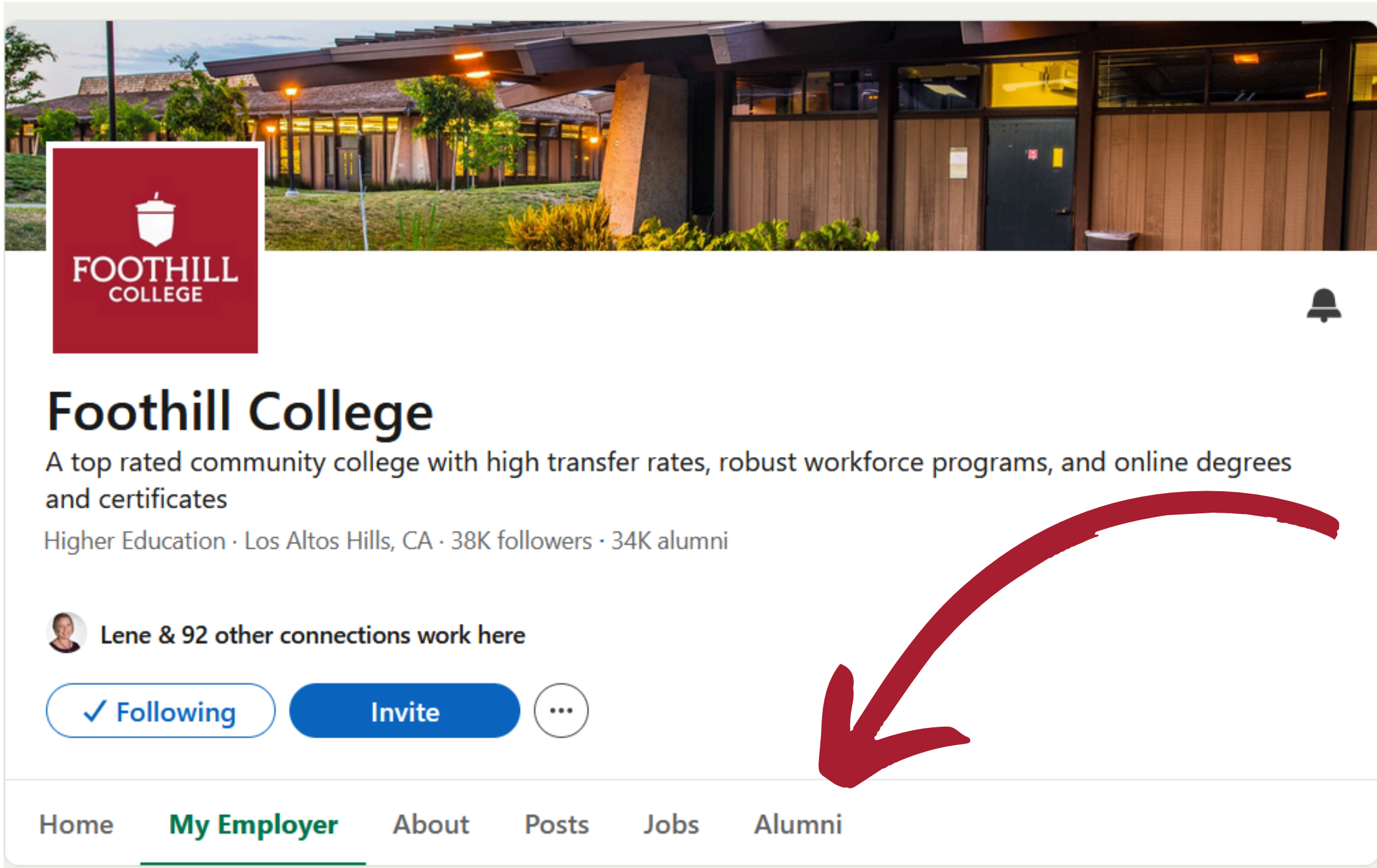
# SLI Canvas Shell



# CANVAS

- Internship tips
- Guidelines on resumes
- Updated listings of resources

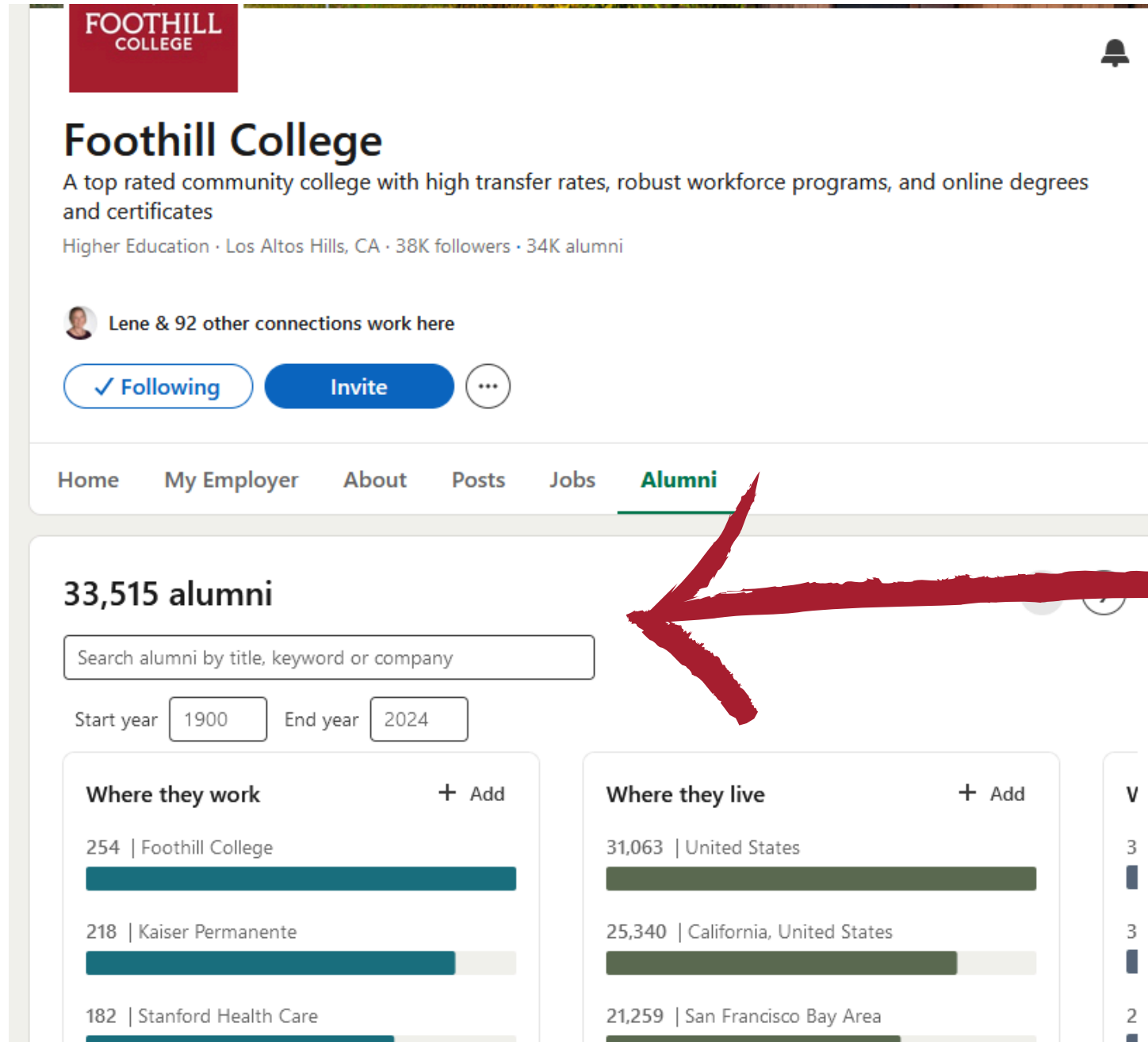
# LinkedIn



The screenshot shows the LinkedIn profile for Foothill College. At the top is a banner image of a modern building. Below it is the college's logo, a red square with a white shield and the text "FOOTHILL COLLEGE". To the right of the logo is a notification bell icon. The name "Foothill College" is displayed in large black font, followed by a description: "A top rated community college with high transfer rates, robust workforce programs, and online degrees and certificates". Below the description, it says "Higher Education · Los Altos Hills, CA · 38K followers · 34K alumni". A small profile picture of a woman is shown next to the text "Lene & 92 other connections work here". Below this are three buttons: "Following" (with a checkmark), "Invite", and a three-dot menu icon. At the bottom of the profile is a navigation bar with tabs: "Home", "My Employer" (which is highlighted with a green underline), "About", "Posts", "Jobs", and "Alumni". A large red arrow points from the "Alumni" tab to the right side of the image.

Click on Alumni

# LinkedIn



The screenshot shows the LinkedIn profile for Foothill College. At the top, there is a header with the college's name and logo. Below this, the college's name is displayed in a large font, followed by a brief description: "A top rated community college with high transfer rates, robust workforce programs, and online degrees and certificates." It also mentions "Higher Education · Los Altos Hills, CA · 38K followers · 34K alumni".

Below the description, there is a section for connections: "Lene & 92 other connections work here". This section includes buttons for "Following", "Invite", and a menu icon.

A navigation bar is visible with tabs for "Home", "My Employer", "About", "Posts", "Jobs", and "Alumni". The "Alumni" tab is currently selected and highlighted with a red underline.

Under the "Alumni" tab, the text "33,515 alumni" is displayed. Below this is a search bar with the placeholder text "Search alumni by title, keyword or company". There are also filters for "Start year" (set to 1900) and "End year" (set to 2024).

Two main data visualization sections are shown: "Where they work" and "Where they live".

Where they work	Where they live
254   Foothill College	31,063   United States
218   Kaiser Permanente	25,340   California, United States
182   Stanford Health Care	21,259   San Francisco Bay Area



Search by major,  
career, college

# LinkedIn

2,495 alumni

Keyword search already applied







engineering X Clear all

Start year 1900 End year 2024

Where they work	Where they live
39   Apple	2,381   United States
25   Tesla	1,911   California, United States
19   Foothill College	1,581   San Francisco Bay Area

Show more

### People you may know

 <p><b>Quang Truong</b> - 2nd Chemical Engineering @ UCLA</p> <p>Isabelle Hong, Sydney Wheeler, and 5 other mutual connections</p> <p>Connect</p>	 <p><b>Efrain Camacho</b> - 2nd Mechanical Engineering Student at Foothill College</p> <p>Marissa Elena Véllez, PhD, Alessandro Pianetta, and 15 other mutual connections</p> <p>Connect</p>	 <p><b>Serena Lau</b> - 2nd BS in Mechanical Engineering</p> <p>Ashley lau is a mutual connection</p> <p>Connect</p>
 <p><b>Sarah Sanogo</b> - 2nd Electrical Engineering</p> <p>Scott Lankford, Mahant Satish, and 2 other mutual connections</p> <p>Connect</p>	 <p><b>Mohammad Fir...</b> - 2nd Quality Assurance Test Engineering @Google via...</p> <p>Miloni Gandhi, Henry Fan, and 6 other mutual connections</p> <p>Connect</p>	 <p><b>Max Benedetti</b> - 2nd Materials Engineering Student at Foothill College</p> <p>Daniel Ramos, Steve Silva, and 23 other mutual connections</p> <p>Connect</p>

Scroll through and click on profiles to learn about academic and career paths.



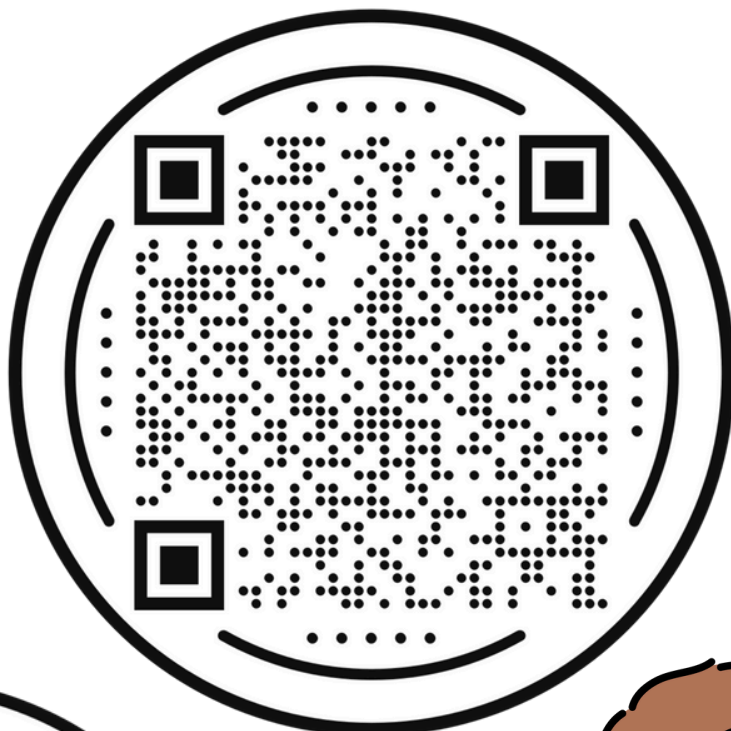
Then connect for informational interview!

# QUESTIONS?

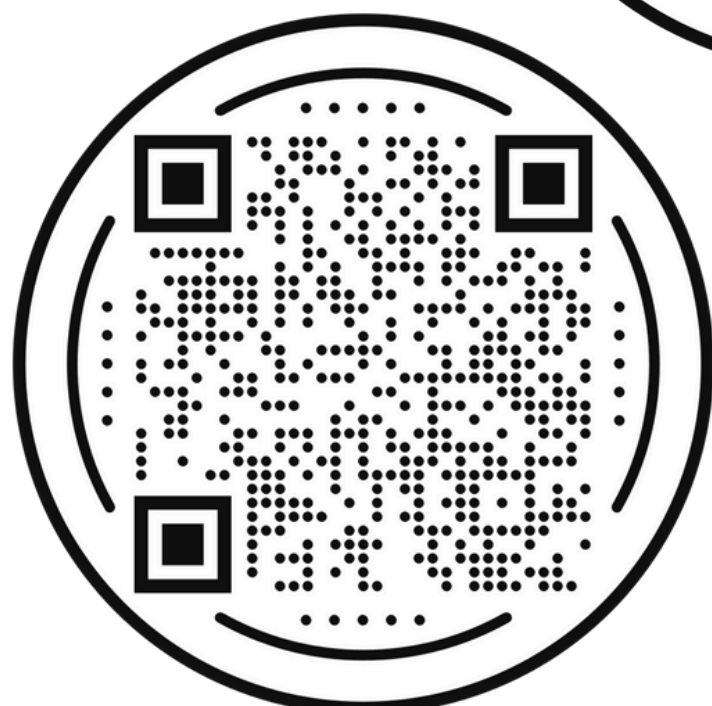
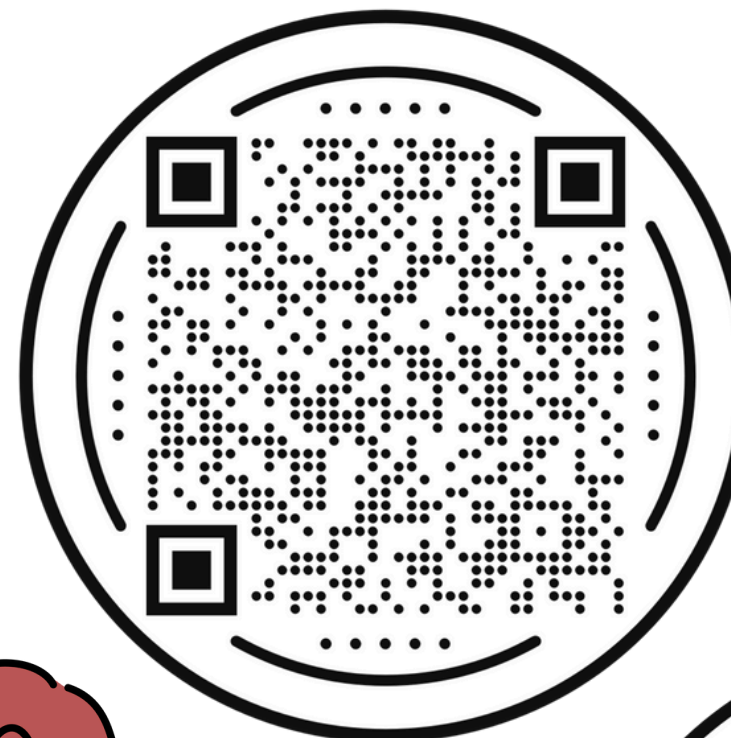


# CONNECT WITH US

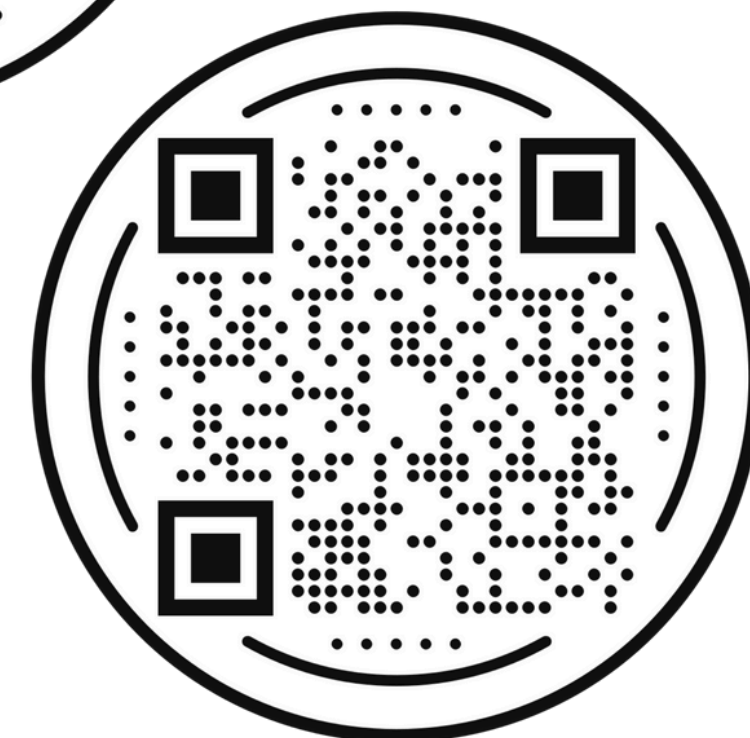
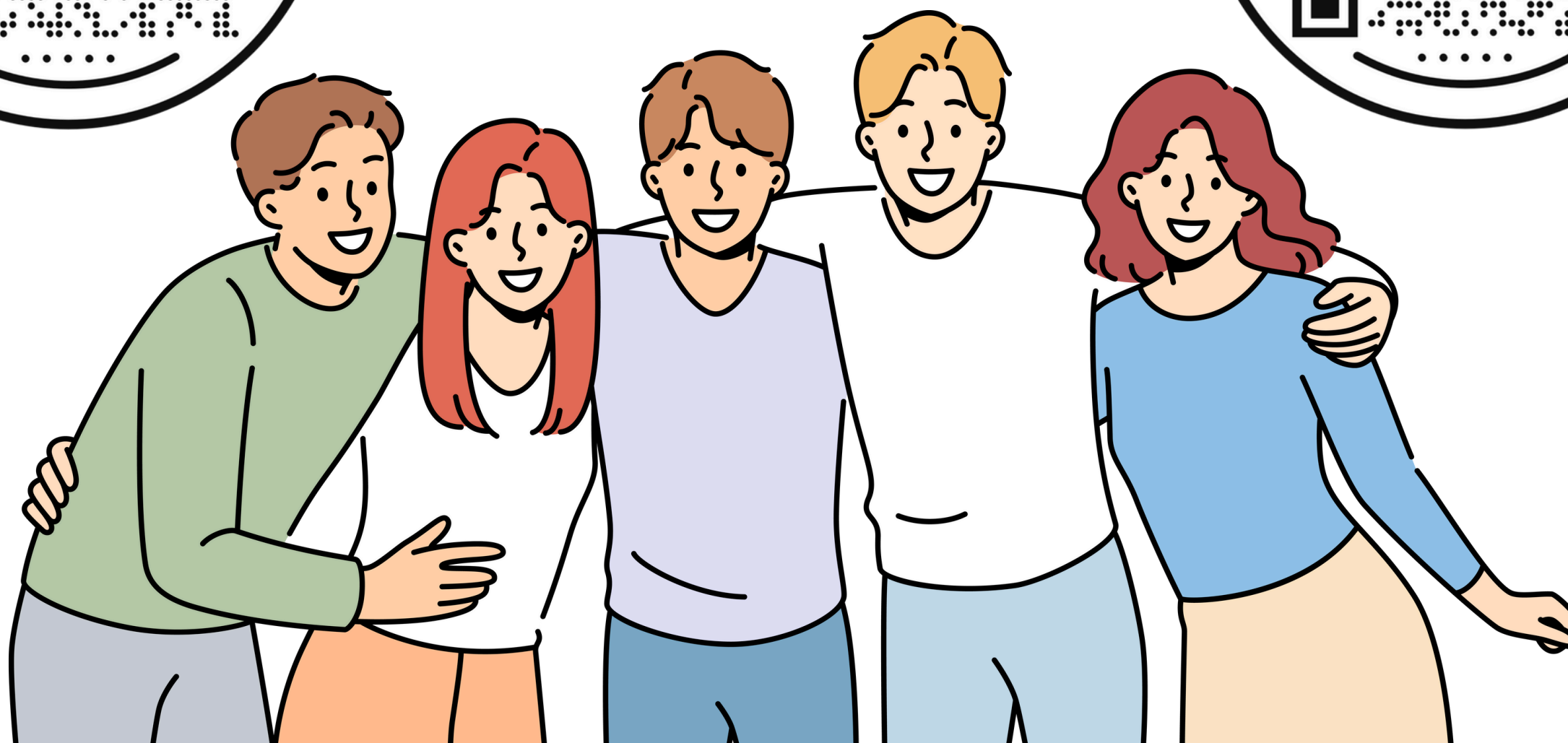
NEWSLETTER



YOUTUBE



INSTAGRAM



SLI DISCORD



# YOUR FEEDBACK

