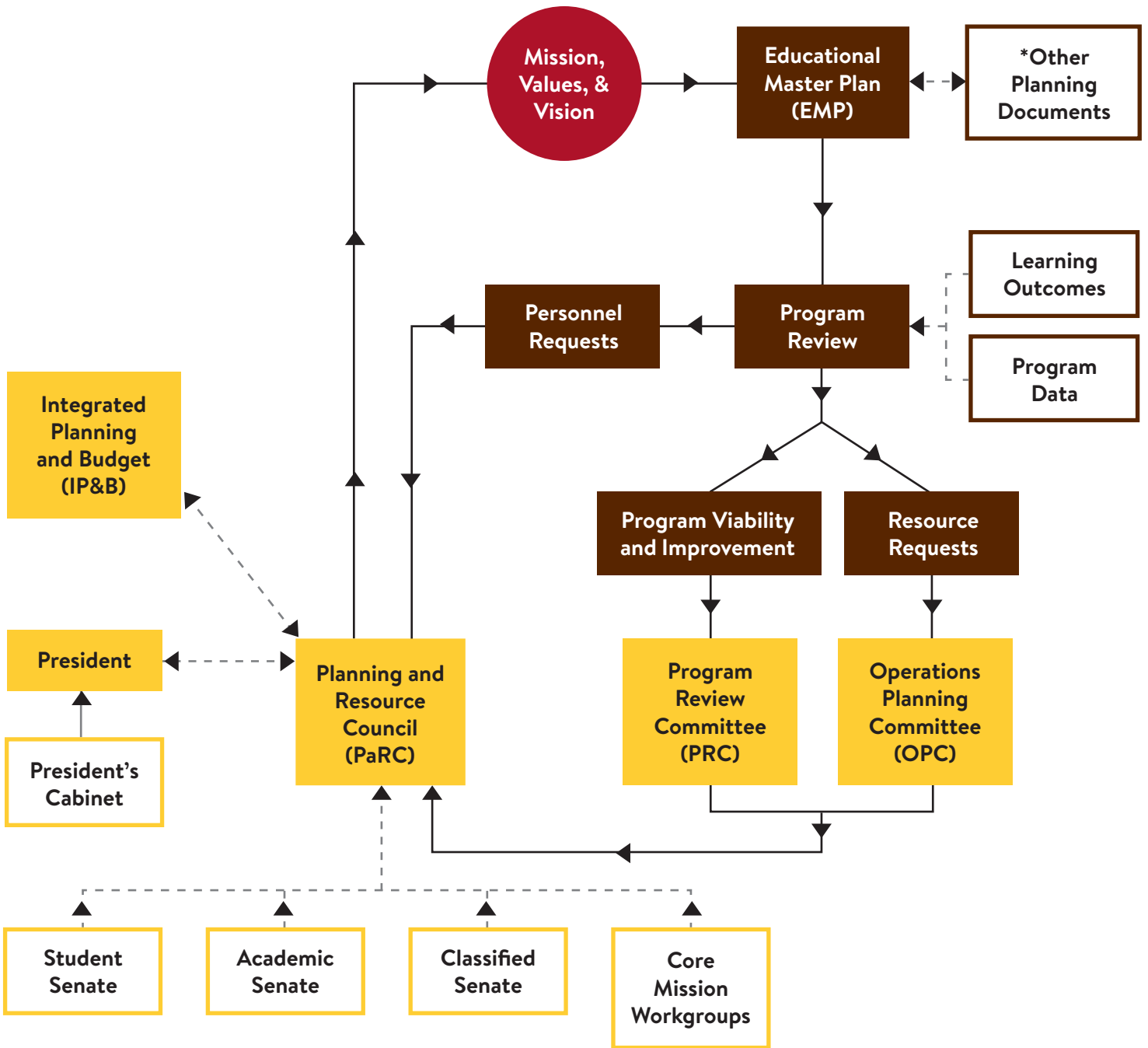


# Foothill College

## Planning and Resource Process



- = Constituency and Participatory Groups
- = Planning and Resource Prioritization Process
- = College Mission Statement, Core Values, and Vision Statement

\*Other planning documents and examples include strategic objectives, student equity plan, basic skills initiating student success and support program plan, sustainability plan, technology plan, and facilities master plan.

# FOOTHILL COLLEGE

## Planning and Resource Council (PaRC) Planning Calendar

	Year 1 2011-12	Year 2 2012-13	Year 3 2013-14	Year 4 2014-15	Year 5 2015-16	Year 6 2016-17	Year 17 2017-18
Accreditation	Site Visit	Follow-up visit/report; Substantive Change report	Annual ACCJC Reports/Institutional Standards (IEPI)		Form teams; Substantive Change report	Self-study	Site Visit
Planning	Governance review	Mission review	Values and Goals review	Educational Master Plan (EMP) update	Other College Plans Revise Mission review		Governance review
	Annual Core Mission Workgroups Objectives and Reflections [Make up the Planning and Resource Council (PaRC)] Annual Governance Survey [Integrated Planning and Budget (IP&B) task force convenes]; Annual EMP update						
Resource Allocation	Annual Resource Allocation Process [Program Review (program/department); Dean; VP; Operations Planning Committee (OPC); PaRC; President]						
Program Review	3-Year Cycle (annual and comprehensive) [Annuals: Program/Dept/Unit; Dean/Director; VP Comprehensives: Program/Dept/Unit; Dean/Director; VP; Program Review Committee (PRC); PaRC; President]						
ILOs	Administer *CCSSE	Review CCSSE results	Administer CCSSE	Review CCSSE	Administer accreditation Survey	Review accreditation survey results	Administer CCSSE
SLOs	Annual Assessment of Course-Level Outcomes (CL-SLOs), Program-Level Outcomes (PL-SLOs), Service Area Outcomes (SS-SLOs), Administrative Unit Outcomes (AU-SLOs)						

\*CCSSE = Community College Survey of Student Engagement