

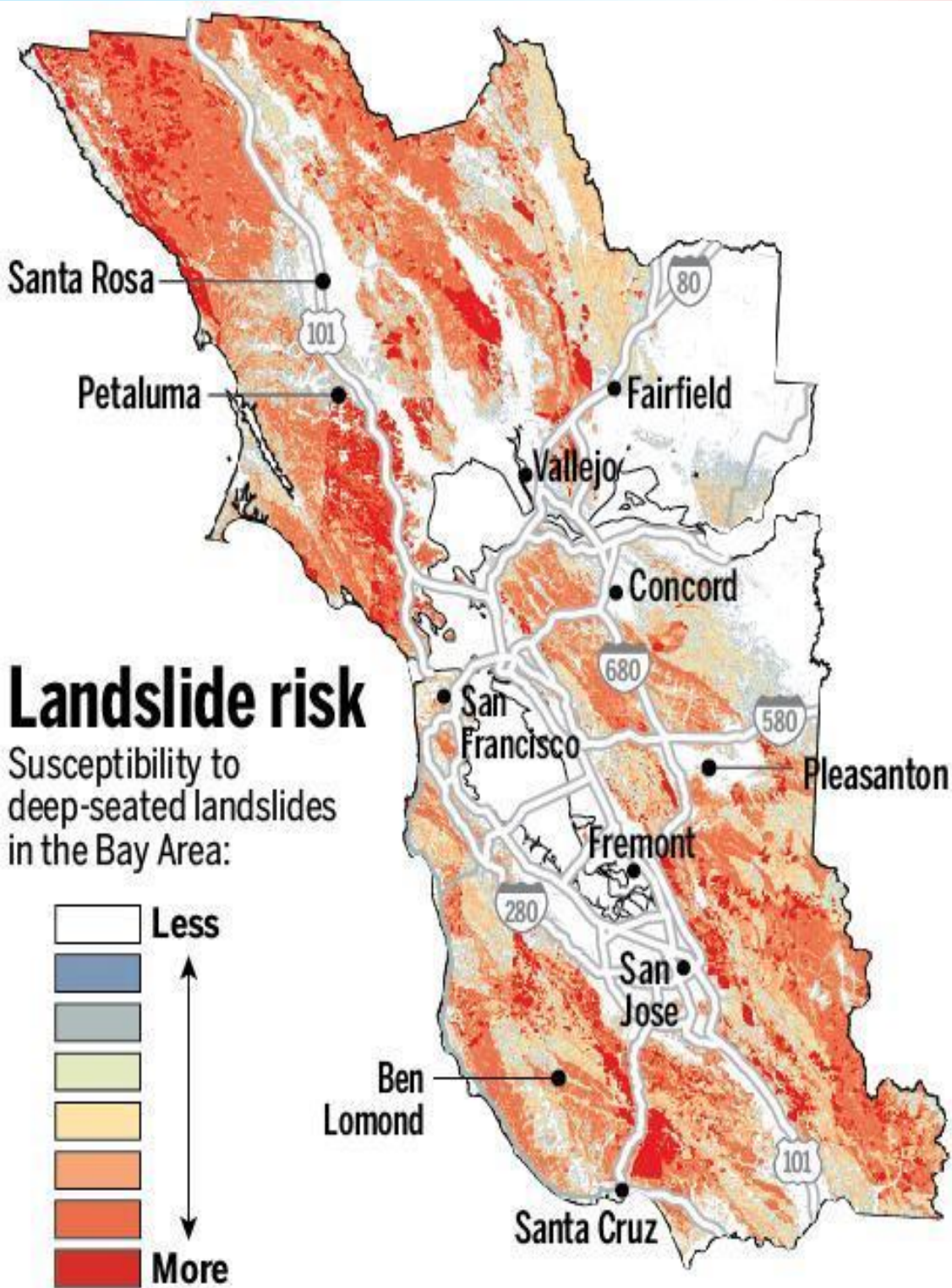
CALIFORNIA IS A FLOOD-PRONE STATE



Population in Floodplain



Source: U.S. Army Corps of Engineers, California Department of Water Resources (2013)



BEWARE - BEFORE BEFLOKE



WATCH WEATHER FORECAST



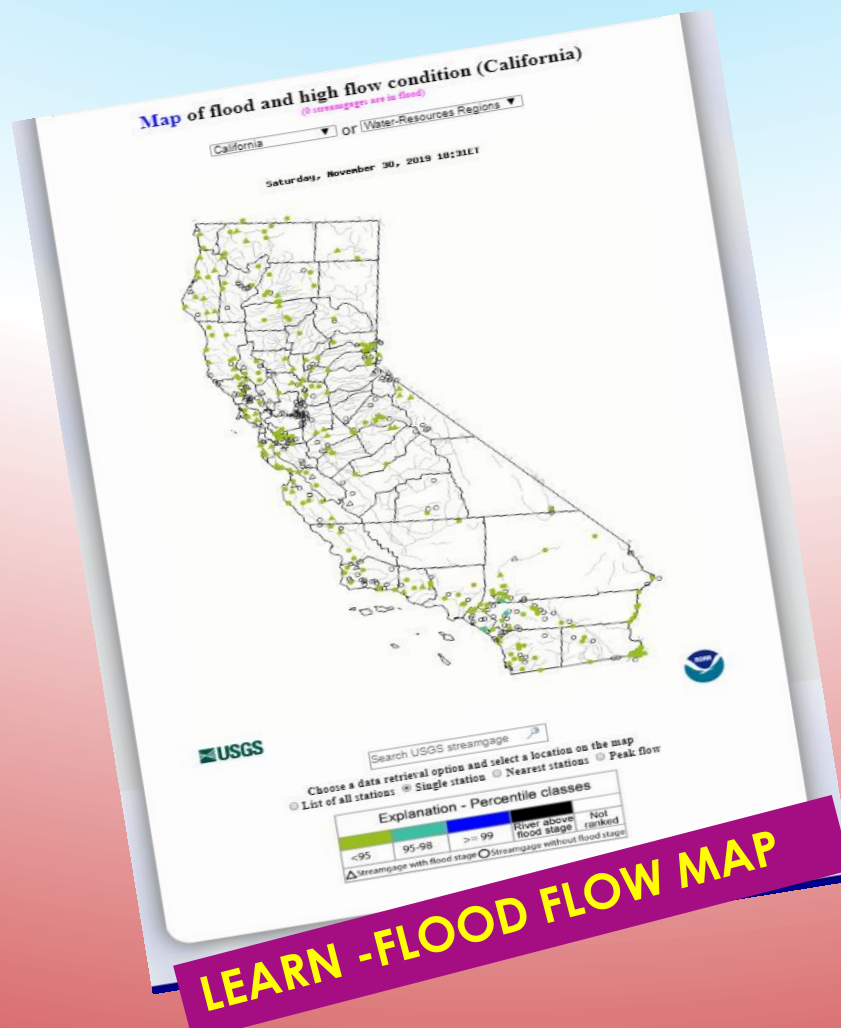
MAKE EVACUATION PLAN



LEARN EVACUATION ROUTES




PACK EMERGENCY SUPPLIES




PREPARE AND PROTECT NEIGHBORHOOD

DURING THE FLOOD




GAS

OFF


ELECTRIC

TURN OFF ELECTRICITY AND GAS



Don't underestimate the power of water!





DON'T WALK OR DRIVE DURING FLOOD



PROTECT YOUR PETS& KEEP THEM IN SAFE PLACE WITH YOU



FOLLOW THE NEWS, MESSAGE

9-1-1

CALL IF YOU CAN
TEXT IF YOU CAN'T





GET TO HIGHER GROUND

AFTER FLOOD



DON' T WALK ON FLOOD WATER



DON' T TOUCH POWERLINES / STAY AWAY



WAIT FOR THE CLEAR & SAFE ANNOUNCEMENT TO RETURN



CLEAN & DISINFECT



COMMUNICATE WITH YOUR FAMILY

STOP EXTREME WEATHER – PROTECT EARTH



References

“Disasters and Emergencies.” Ready.gov, www.ready.gov/be-informed.

“Infographic: Be Ready! Floods.” Centers for Disease Control and Prevention, Centers for Disease Control and Prevention, 21 Nov. 2016, www.cdc.gov/cpr/infographics/br-floods.htm.

“Map of Flood and High Flow Condition (California).” USGS WaterWatch -- Streamflow Conditions, waterwatch.usgs.gov/new/index.php?m=flood&r=ca&w=map.