



Learning Communities and Equity Programs

Learning Communities Meeting
March 17, 2017

E. Kuo, FH Equity Programs

Foothill College, 12345 El Monte Road, Los Altos Hills, CA 94022 | foothill.edu



Overview

- Per Student Equity Plan (SEP), establishment of an “equity programs office”
- Equity funded positions to support SEPs implementation



Current positions

Director,
Equity Programs

Admin Asst I

Instructional Services
Technician-STEM Ctr

Instructional Services
Coordinator-Research

- Instructional Services Technician and Instructional Services Coordinator report to other managers



Organizational Structure: Proposed

Student Equity Plan & SEP-3SP-BSI Alignment

Early Interventions



Includes learning
communities

Mentoring

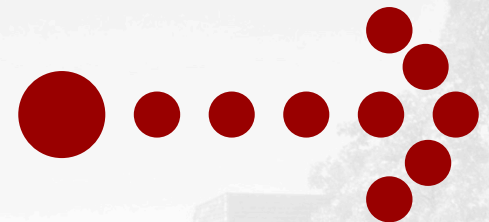


Professional
Development



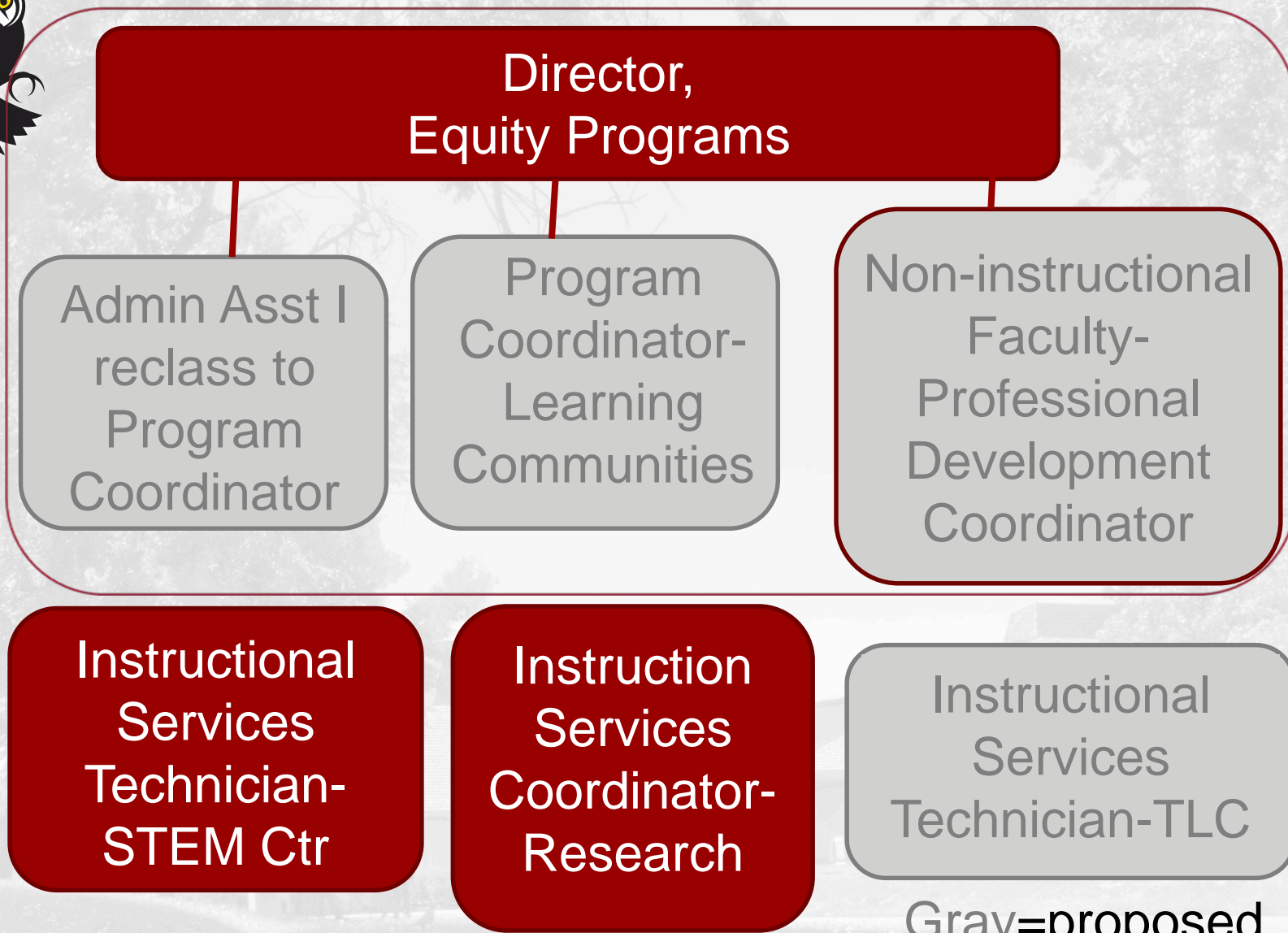
**Student Success
Retention Team**

**SEP & Alignment
Implementation**





Proposed positions



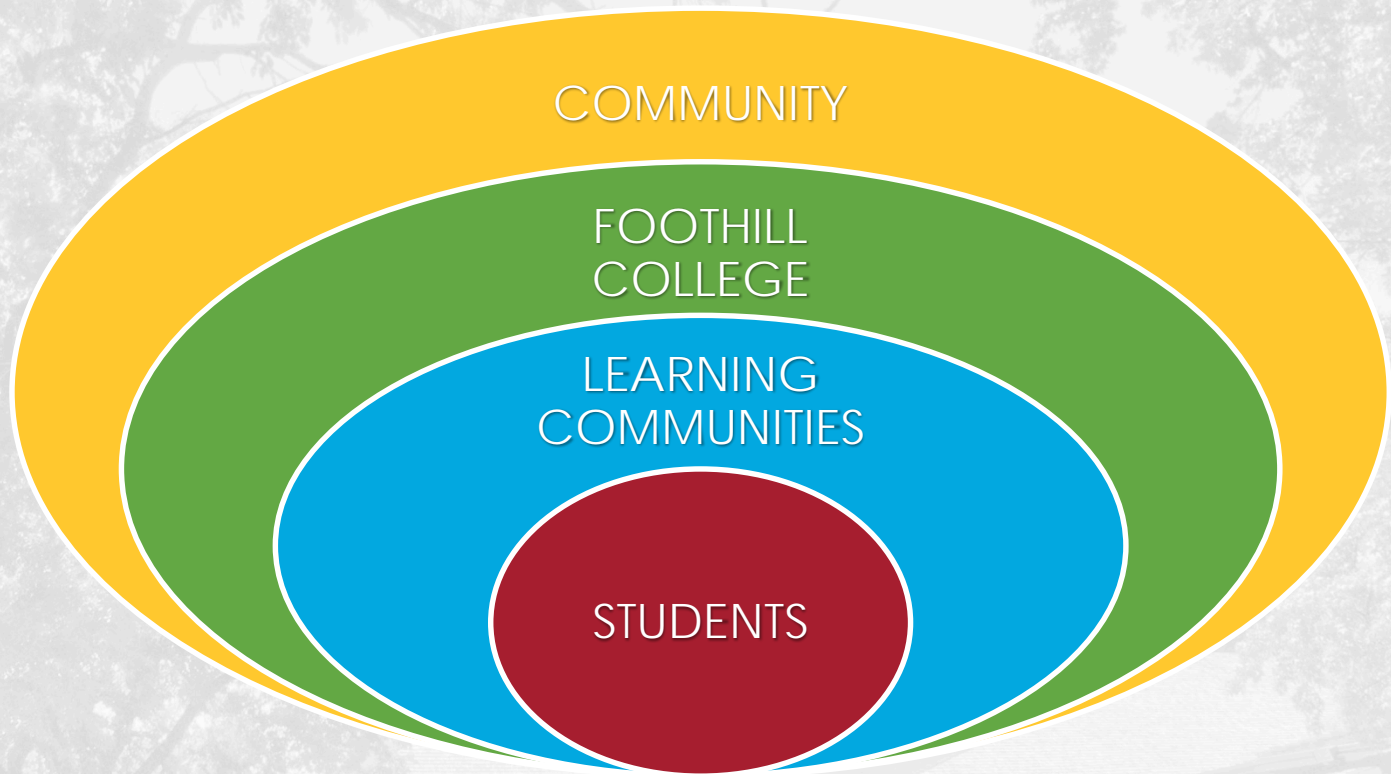


Learning Communities: Increase support and facilitation

- Opportunities for collaboration
- Support for program planning
- Streamline processes
- Document efforts
- Centralize evaluation



Learning Communities: Increase support and facilitation



- Serve as resource for faculty program coordinators; oversight to learning communities to promote institutional vision (BSI-3SP-SE alignment)



Learning Communities

- Director as student equity funds budgeteer
 - First-Year Experience
 - Umoja
- Status quo for Puente and STEM Core budgeteer and reporting



Learning Communities Support

- Director of Equity Programs
 - Administrative reporting
- Learning Communities Coordinator
 - Logistics and operations
- Faculty program directors drive the curriculum



Budget: Potential Choices

- Funding constraints—no additional funding
- Funding options → reductions
 - Professional development
 - Direct student aid/student salaries



FOOTHILL COLLEGE

**12345 El Monte Road
Los Altos Hills, CA 94022**

foothill.edu



/foothillcollege



/foothillnews

