



**FOOTHILL COLLEGE
OPENING DAY**

September 23, 2016



WELCOME & INTRODUCTION



THUY THI NGUYEN
PRESIDENT
Twitter: *@FoothillPrez*



NEW COLLEAGUES



MAYRA AGUILLERA
Student Success Specialist



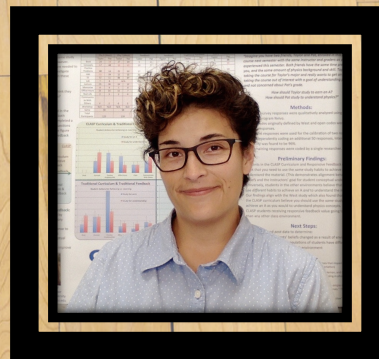
LATISHA BRIGGS
Evaluation Specialist



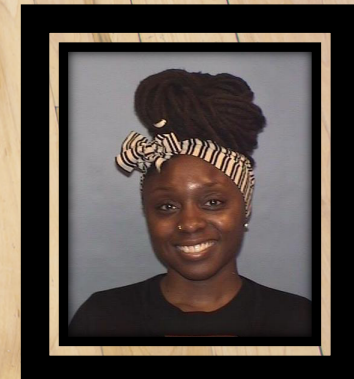
PAULINE BROWN
Executive Assistant
Student Services



ELIZABETH BRUMBAUGH
Teacher in Residence
Krause Center for Innovation



ANNIE CHASE
Instructor – Physics



FOUNTAINETTA COLEMAN
Assessment Specialist



NEW COLLEAGUES



NANCY CORTEZ
Human Resources Technician II



DANMIN DENG
Instructional Support Coordinator
Sunnyvale Center



CLIFTON DERBING
Counselor
Psychological Services



VALERIE DIAZ DE ARCE
Graphic Design Technician



ALEXIS DONATO
Counselor



JORDAN FONG
Instructor – Graphic Design



NEW COLLEAGUES



CLAUDIA FLORES
Health Career Program Coordinator



KATHERINE FORTUNE
Senior Administrative Assistant
Student Affairs



MILONI GANDHI
Director – International Market
Development & Student Experience



SAMERA HADI
Financial Aid Outreach Assistant



KELAIAH HARRIS
Administrative Assistant I
Equity Programs



HIEU HUYNH
Program Coordinator II
Enrollment Services



NEW COLLEAGUES



STEVEN KNIGHT
Program Director
Diagnostic Medical Sonography



ALEXANDER KORNIAKOV
Instructor – Accounting



JIIN LIANG
Instructional Support Technician



GABRIEL LOMELI
Outreach Assistant



DONNA MIRANDA
Program Coordinator I



FAN ORR
Financial Aid Assistant



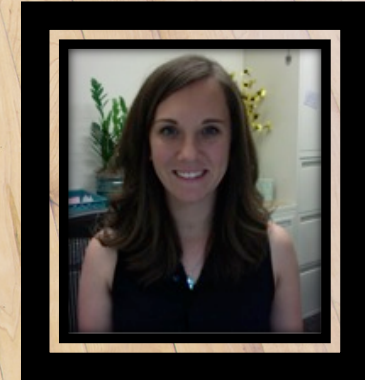
NEW COLLEAGUES



JOSHUA PELLETIER
Instructional Associate – Library



LISA SLEDE
Counselor
Psychological Services



RACHEL SOLVASON
Articulation Specialist



SHAELYN ST. ONGE-COLE
Instructor – Veterinary Technology



ANGEL TZENG
Instructional Services Coordinator
Equity Programs



TRACY VILLANUEVA
Instructor – EMS / Paramedic



FAMILIAR FACES IN NEW PLACES



MARK ANDERSON
Instructor – Music



HILARY BACON
Counselor



KAI CHANG
Senior EOPS Specialist



CLEVE FREEMAN
Transfer Center Director



APRIL HENDERSON
EOPS Supervisor



HENRY JUNG
Senior Admissions & Records
Coordinator, Sunnyvale Center



FAMILIAR FACES IN NEW PLACES



KENT McGEE

Graduation & Evaluation Coordinator



DOKESHA MEACHAM

Counselor



OXANA PANTCHENKO

Director
Science Learning Institute



SIMON PENNINGTON

Interim Dean – Fine Arts,
Communications, Kinesiology & Athletics



ATOUSA POJHAN

Evaluation Specialist



BRIAN ROBERTS

Senior Evaluations Specialist



FAMILIAR FACES IN NEW PLACES



MOATY FAYEK

Interim Vice President – Workforce
Development & Institutional Advancement



ELAINE KUO

Interim Director of Equity Programs



ANDREW LAMANQUE

Interim Vice President – Instruction
& Institutional Research



LORI SILVERMAN

Interim Dean – Physical Sciences,
Mathematics & Engineering



IN MEMORIAM ...





CELEBRATING 7 YEARS AT FHDA



Scott Goldstone
Brenda Hanning
Yuh Ni
Norman Paris
Liz Roberts

Diana Uilecan
Robert Ward
William Webb
Tai Wong



CELEBRATING 15 YEARS AT FHDA

Luis Barreto	Elvia Herrera	Erin Ortiz
Laurie Bertani	Wilbert Hollins	Elaine Piparo
Ru Yu Chen	Zohreh Jazaeri	Amelia Quiros
Marilyn Cheung	Henry Jung	Ikuko Rakow
Setsuko Chiba	Arthur Levine	Julio Rivera-Montanez
Bradley Creamer	Jeffrey Levitch	Doren Robbins
Roberto Cormia	Debra Lew	Jo Rodgers
Patricia Crespo-Martin	Brian Lewis	Al Ruffinelli
Bernie Day	Kent McGee	Leticia Serna
Leticia Delgado	Charlie McKellar	Mary Thomas
Nancy Ghodrat	Martin Melia	Kristin Tripp Caldwell
Hilary Gomes	Sherri Mines	Lan Truong
Kevin Harral	Patrick Morriss	Francisca Varela-Ramirez



CELEBRATING 25 YEARS AT FHDA

Kimberly Cook
Marnie Francisco
Theresa Hansen
Meredith Heiser
Najwa Jardali

Ellen Mastman
Natalia Menendez
Cara Miyasaki
Preston Ni
Amidollah Salari



CELEBRATING 35 YEARS AT FHDA

35

Betsy Parravi
Roberto Sias



TOTAL YEARS OF SERVICE?

968



Educational Master Plan

- Approved by Board of Trustees on February 08, 2016
- Three Goals
 1. *Equity*
 2. *Community*
 3. *Improvement and Stewardship of Resources*



Strategic Objectives to Operationalize the Ed Master Plan

S SUNNYVALE & ENROLLMENT GROWTH

H HISPANIC SERVING INSTITUTION (H.S.I.)

E EQUITY PLAN

A ACCREDITATION



S.H.E.A.

SUNNYVALE & ENROLLMENT GROWTH

- More than 1.5 percentage point increase in FTES, with successful operation of Sunnyvale Center





S.H.E.A.

FULL TIME EQUIVALENT STUDENTS (FTES)

1% GROWTH

2014-2015 – Total FTES: 13,468

2015-2016 – Total FTES: 13,710



S.H.E.A.

HISPANIC SERVING INSTITUTION (H.S.I.)

- Increase from 22% to 25% Latino students



S.H.E.A.

EQUITY PLAN

- **Implementation & Assessment**

Access

Course Completion

ESL and Basic Skills Completion

Degree and Certificate Completion

Transfer



S.H.E.A.

ACCREDITATION

- College Self-Study (Site Visit – October 2017)
- Bachelor's Degree in Dental Hygiene



S.H.E.A.

ACCREDITATION STEERING COMMITTEE

I



ANDREA HANSTEIN
Director of Marketing & Public Relations

II



CAROLYN HOLCROFT
Academic Senate President

III



ERIN ORTIZ
Classified Senate President

IV

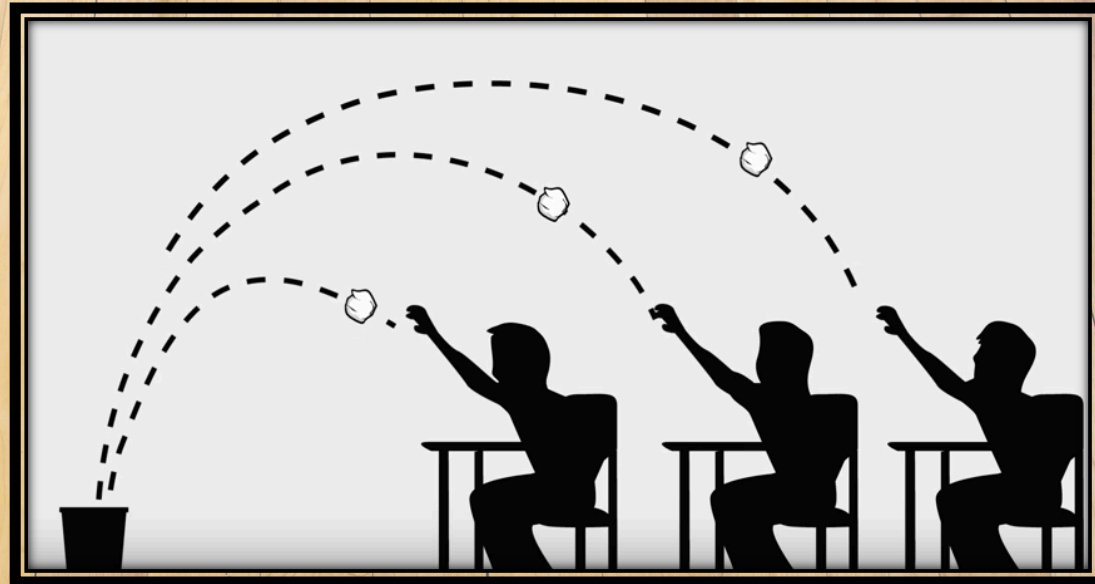


ANDREW LAMANQUE
Interim Vice President
Instruction & Institutional Research



EQUITY

STUDENTS LEARN A POWERFUL
LESSON ABOUT PRIVILEGE





EQUITY

SHARED VISION



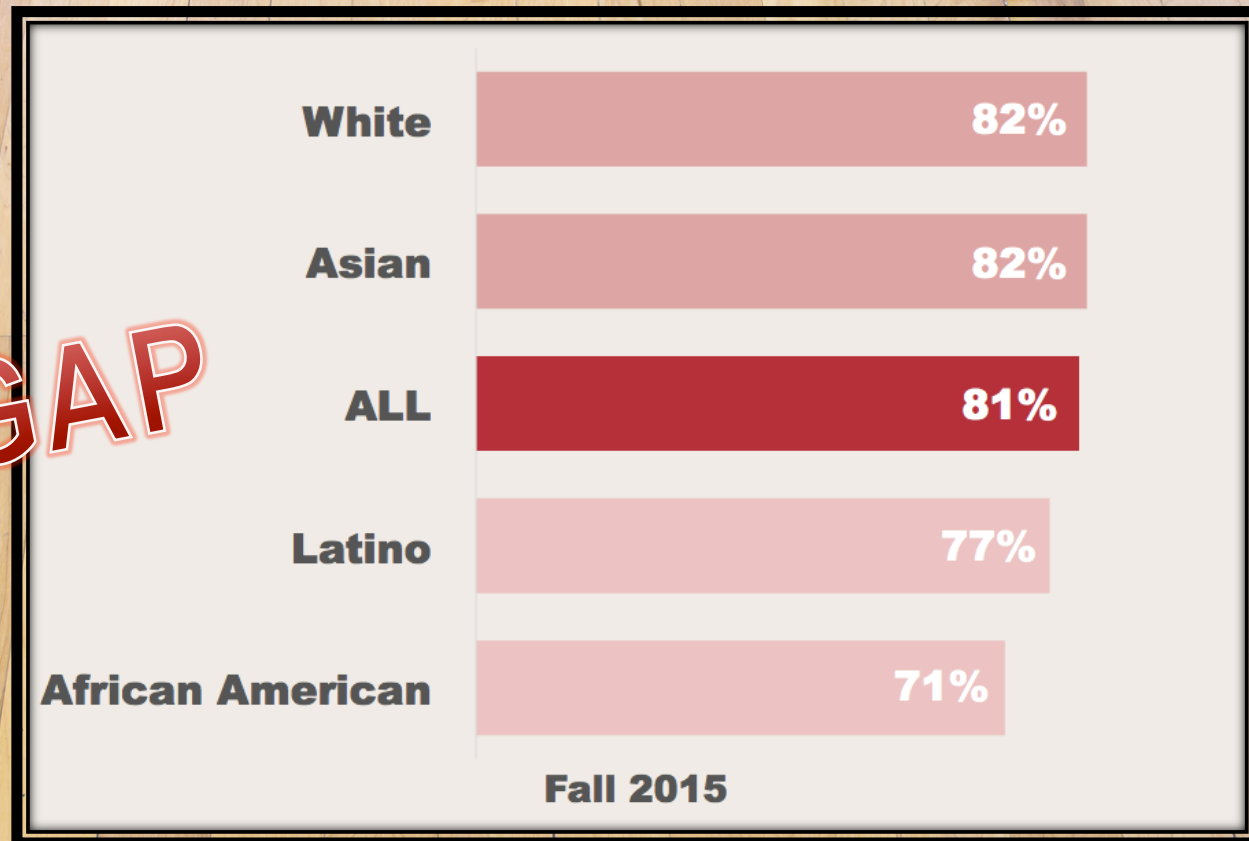


EQUITY MYTH #1 – SOCIO-ECONOMIC

COURSE SUCCESS RATES

BY ETHNICITY AMONG THOSE NOT RECEIVING FINANCIAL AID

11% GAP



Source: FHDA IR&P, ODS, Fall 2015. N=35,125, Financial Aid African American=949, Asian=2,589, Latino=4,101, White=2,261; No Financial Aid African American=742, Asian=6,060, Latino=4,435, White=8,412.
Fall 2015 credit course data. Excludes American Indian/Alaskan Native, Pacific Islanders, Unknown/Other.

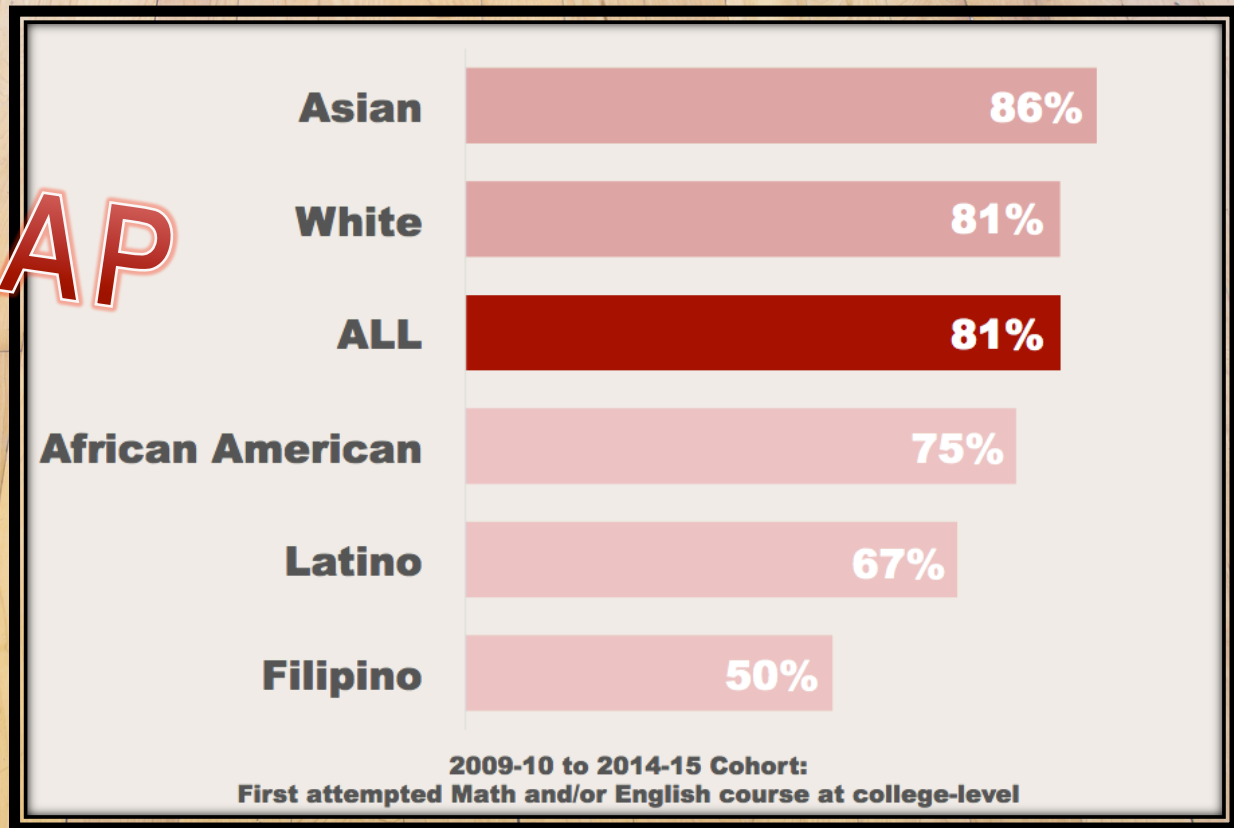


EQUITY MYTH #2 – UNPREPARED

COMPLETION RATES

BY ETHNICITY AMONG THOSE WHO ARE COLLEGE PREPARED

36% GAP



Source: Student Success Scorecard 2016, 2009-10 cohort tracked through 2014-15. Prepared for College N=457, Unprepared for College N=600. Unprepared=lowest course attempted in Math and/or English was below college level; Prepared=lowest attempt Math and/or English course at college level; Excludes Pacific Islanders. Prepared student counts among African American, American Indian/Alaskan Native, Filipino and Pacific Islander are fewer than 10 students. Completion indicator defined as attaining a degree/certificate/transfer/transfer prepared outcome among first-time students with minimum of 6 units earned who attempt any Math or English in the first three years.



EQUITY MYTH #3 – FLAVOR OF THE MONTH

**LET'S TALK
ABOUT IT!**



EQUITY – TAKING IT TO THE NEXT LEVEL

PEER GROUP COMPARISON – COMPLETION RATES

	Measure	2015		2016		
		Peer Group Status	College	Peer Group Status	College	State Avg.
FH	Completion (Prepared)	Highest	83%	Highest	81%	70%
	Completion (Overall)	Above average	63%	Highest	65%	47%
	Completion (Unprepared)	Above average	47%	Highest	53%	40%

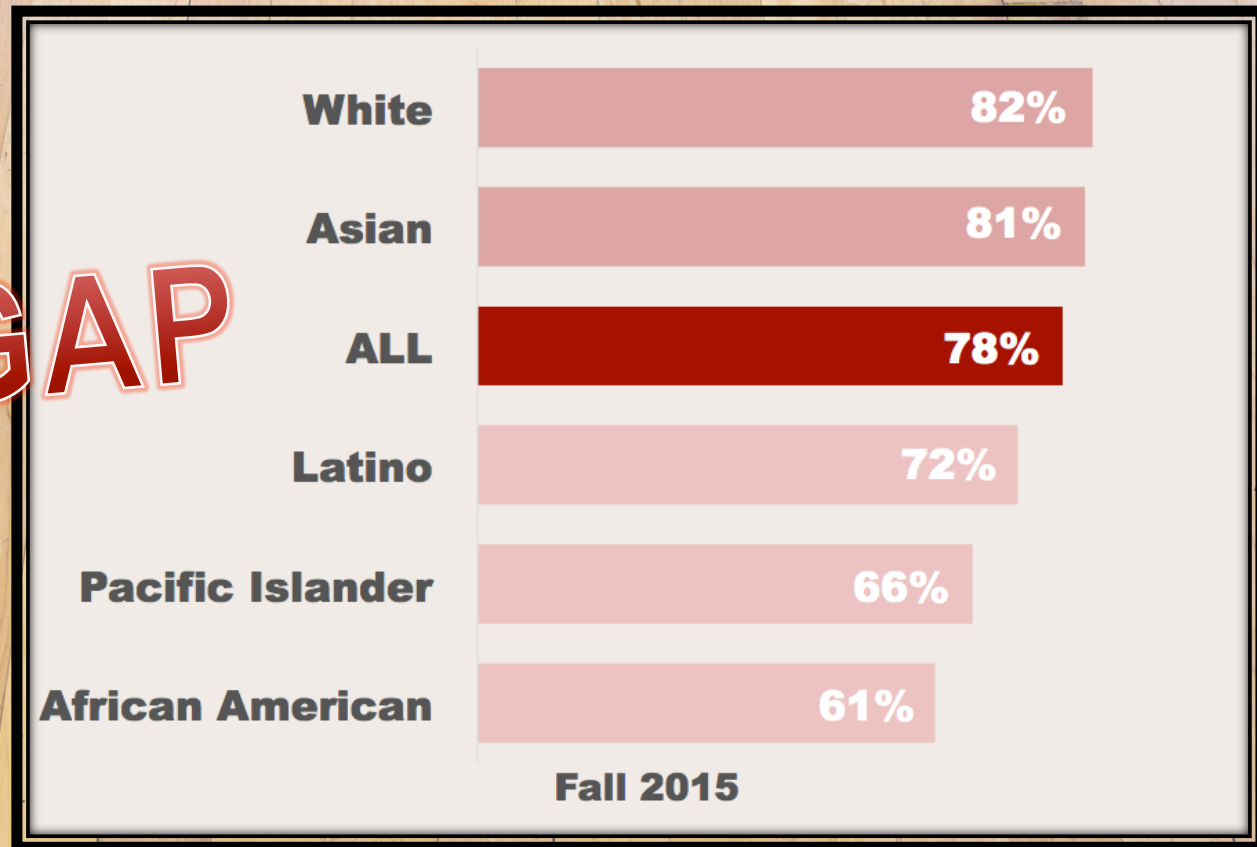


EQUITY – TAKING IT TO THE NEXT LEVEL

COURSE SUCCESS RATES

BY ETHNICITY

21% GAP

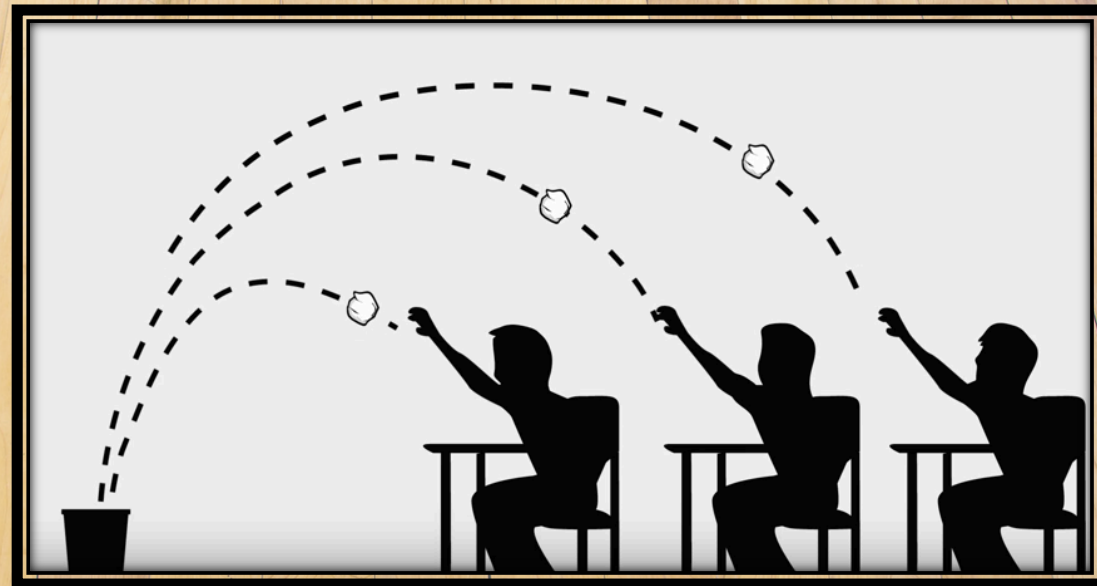


Source: CCCC Data Mart, Credit Course Success Rate Summary Report, Fall 2015. Not online N=24,397; Online N=10,712.
Chart excludes American Indian/Alaskan Native, Multi-Ethnicity and Unknown.



EQUITY – TAKING IT TO THE NEXT LEVEL

3-POINTER – THE GREAT EQUALIZER





EQUITY – TAKING IT TO THE NEXT LEVEL





EQUITY – TAKING IT TO THE NEXT LEVEL

5% INCREASE

in course success rates of disproportionately impacted student groups

(68% [2012-13]; 73% [2015-16])

7% INCREASE

in online course success rates of disproportionately impacted student groups

(57% [2012-13]; 64% [2015-16])



3-POINTER – THE GREAT EQUALIZER

THE NEXT BIG IDEA!

STUDENT ACCESS – *Online Education*

STUDENT SUCCESS – *Scorecard*

STUDENT EQUITY – ?



EQUITY IS ...

Student Success for All ...

Student Success **FOR ALL ...**

Student Success **FOR ONCE & FOR ALL ...**