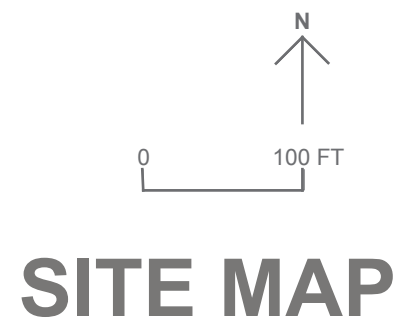
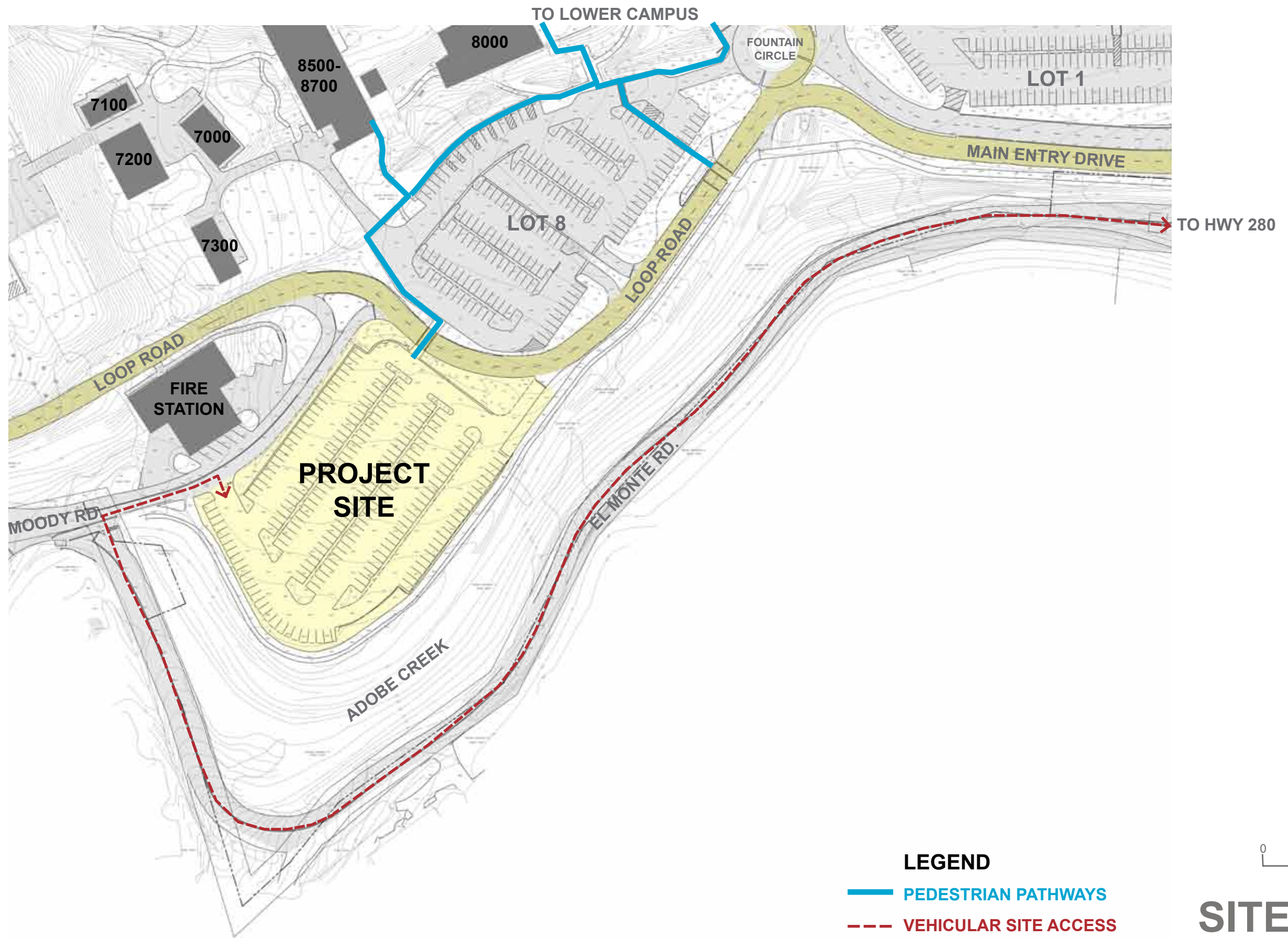




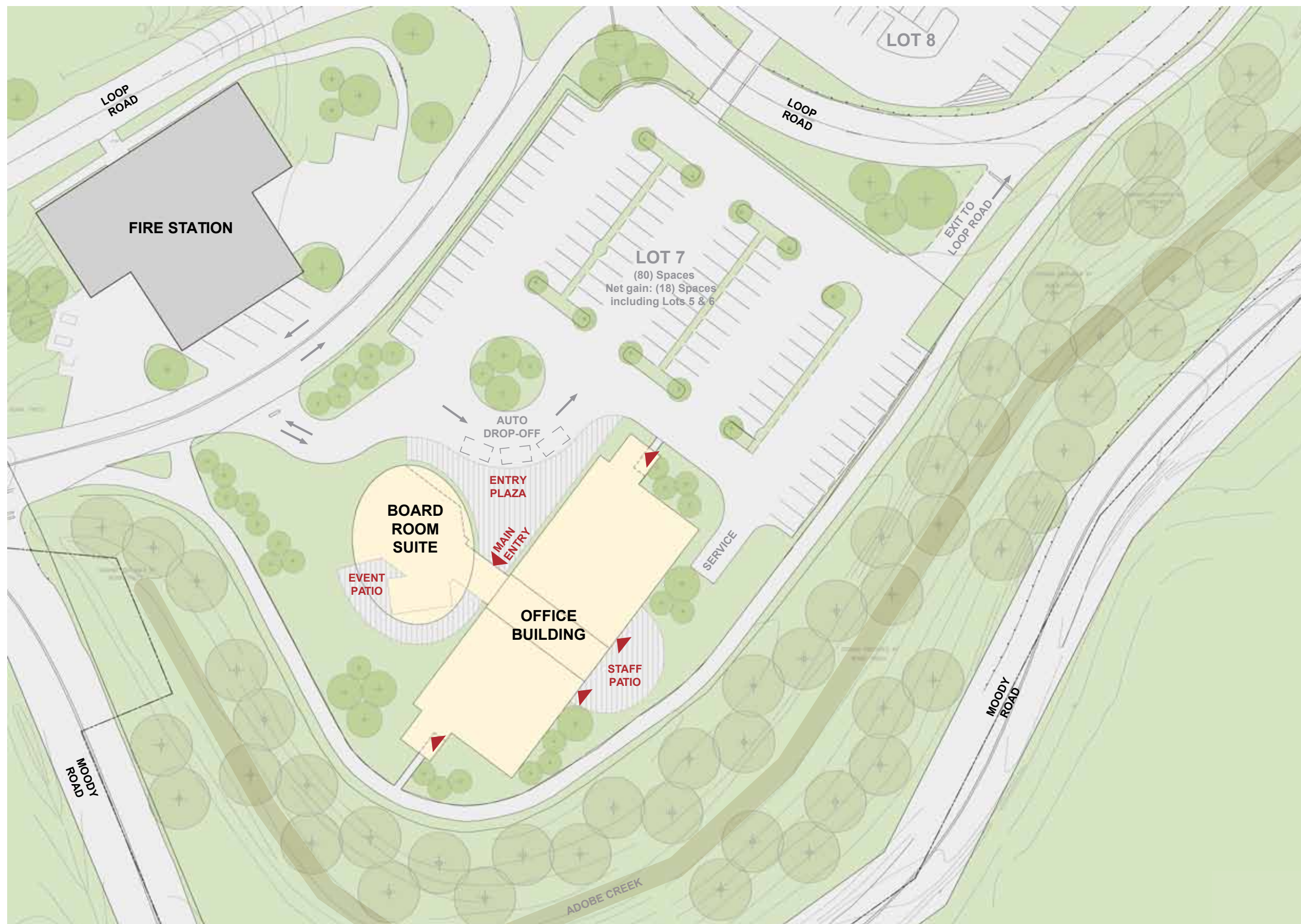
Foothill - De Anza New District Offices
Los Altos Hills, CA

August 25, 2014

RATCLIFF



SITE MAP



SITE ACCESS / CIRCULATION DIAGRAM

TOTAL AREA:

	CHANCELLOR’S SUITE:	1,346 SF
	BOARD ROOM SUITE:	3,200 SF
	FOUNDATION:	1,832 SF
	HUMAN RESOURCES:	3,962 SF
	BUSINESS SERVICES:	5,459 SF
	PURCHASING:	1,696 SF
	<u>AUXILIARY SPACE:</u>	<u>2,187 SF</u>

TOTAL ASF: 19,682 SF

TOTAL GSF: 24,000 SF

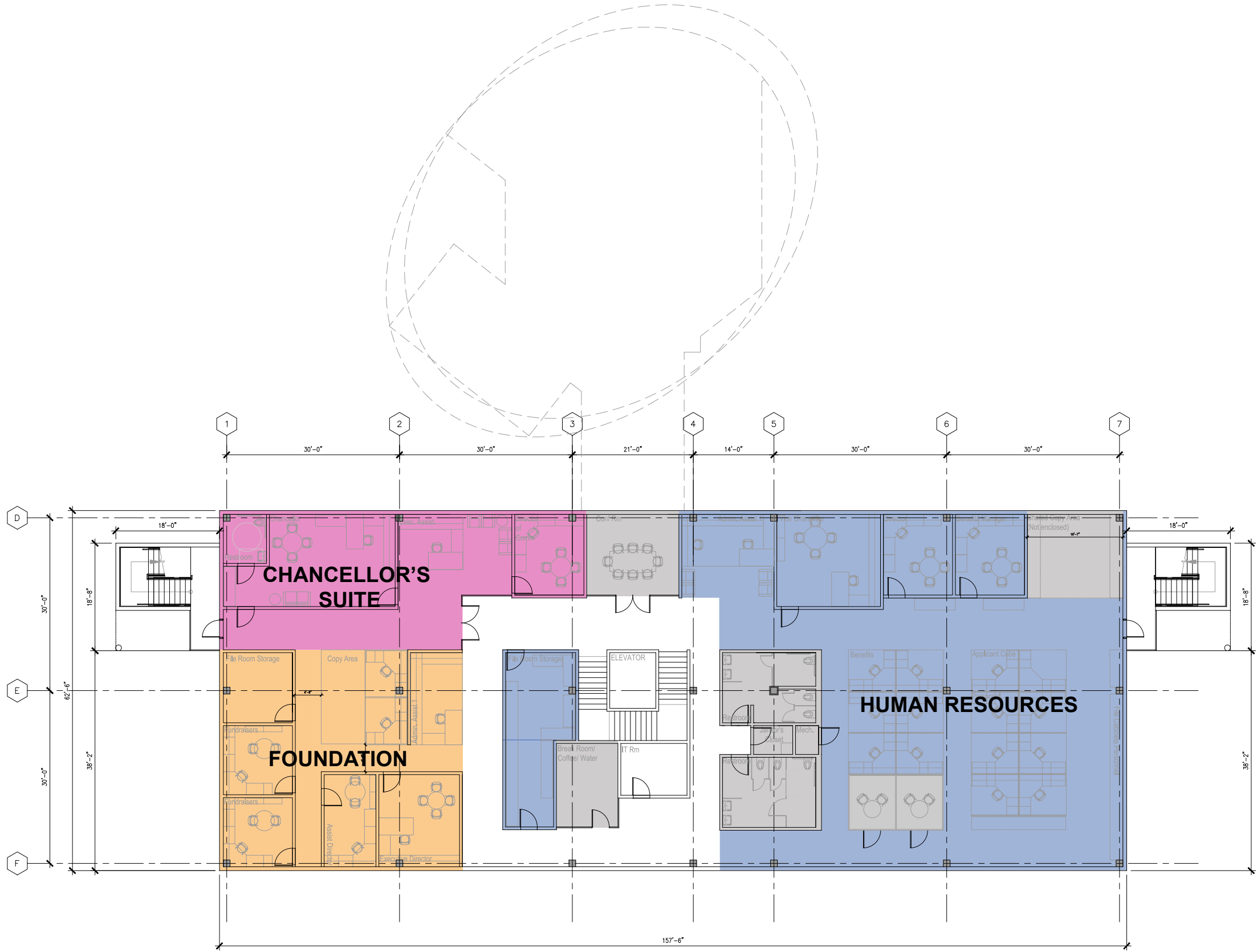
PROGRAM



PLAN - LEVEL 1

LEGEND

- CHANCELLOR'S SUITE
- BOARD ROOM SUITE
- FOUNDATION
- HUMAN RESOURCES
- BUSINESS SERVICES
- PURCHASING
- AUXILIARY SPACE



PLAN - LEVEL 2





3D MODEL VIEW