

Connecting the Dots

Judy Miner, President
Eloise Orrell, Vice President of Instruction
Dolores Davison, President, Academic Senate
Darya Gilani, Project Coordinator
FOOTHILL COLLEGE

*A Collaborative
Process from SLOs to
Resource Allocation*

GOAL:

*Transparent, Collaborative Process for
Integrating Planning & Resource Allocation*

Process to Include:

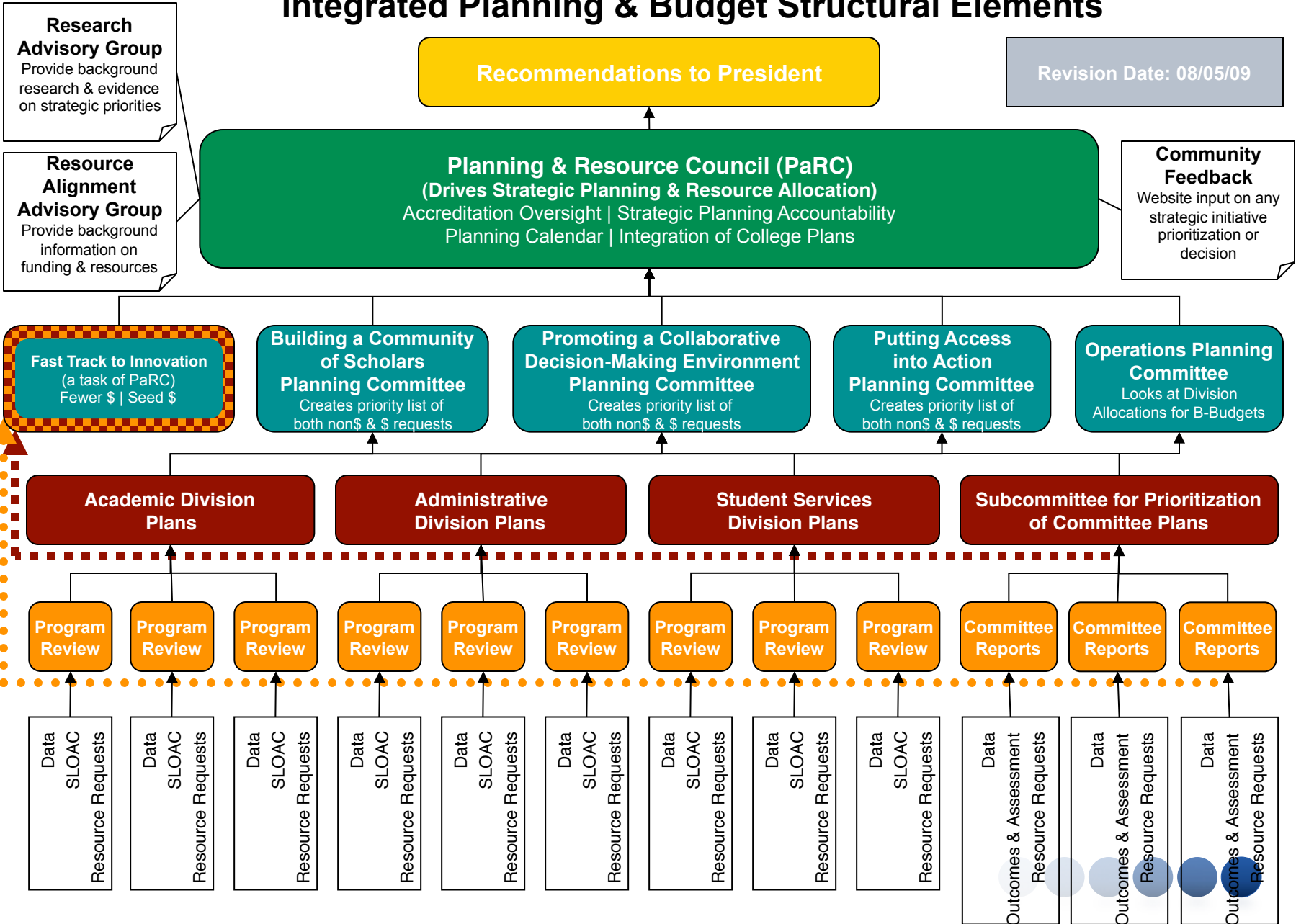
- Faculty
- Staff
- Administrators
- All Divisions and Departments

GUIDING PRINCIPLES:

- Mission Driven
- Increase Student Learning
- Transparent, Understandable, Informed by Data
- Increase collaboration: faculty, staff, students, administration
- Cyclical process for Continuous Quality Improvement
- Foster flexibility, innovation, and accountability
- The process would include all funds

Participatory Governance Integrated Planning & Budget Structural Elements

Revision Date: 08/05/09



OMG!!!

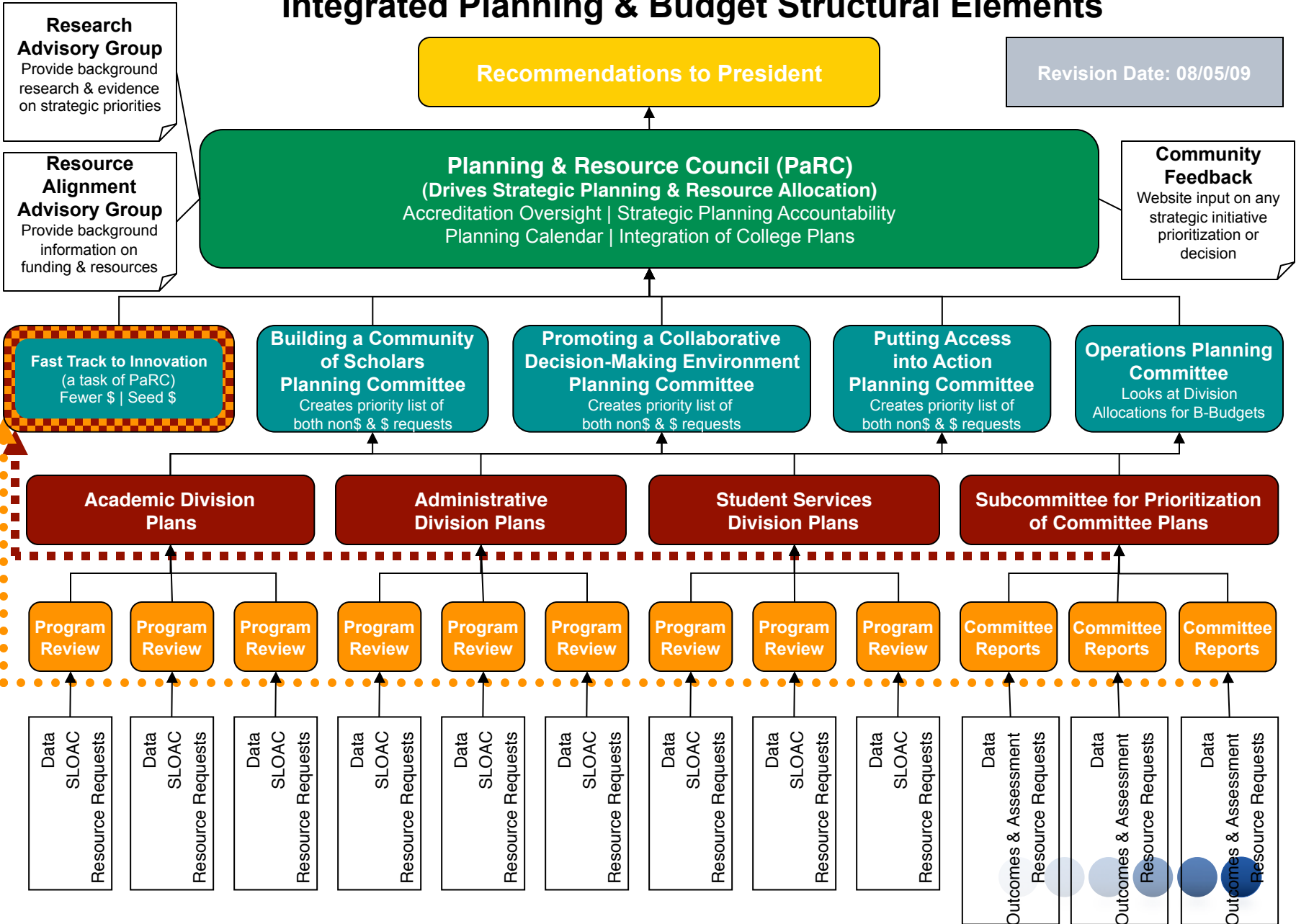


What the heck was that???



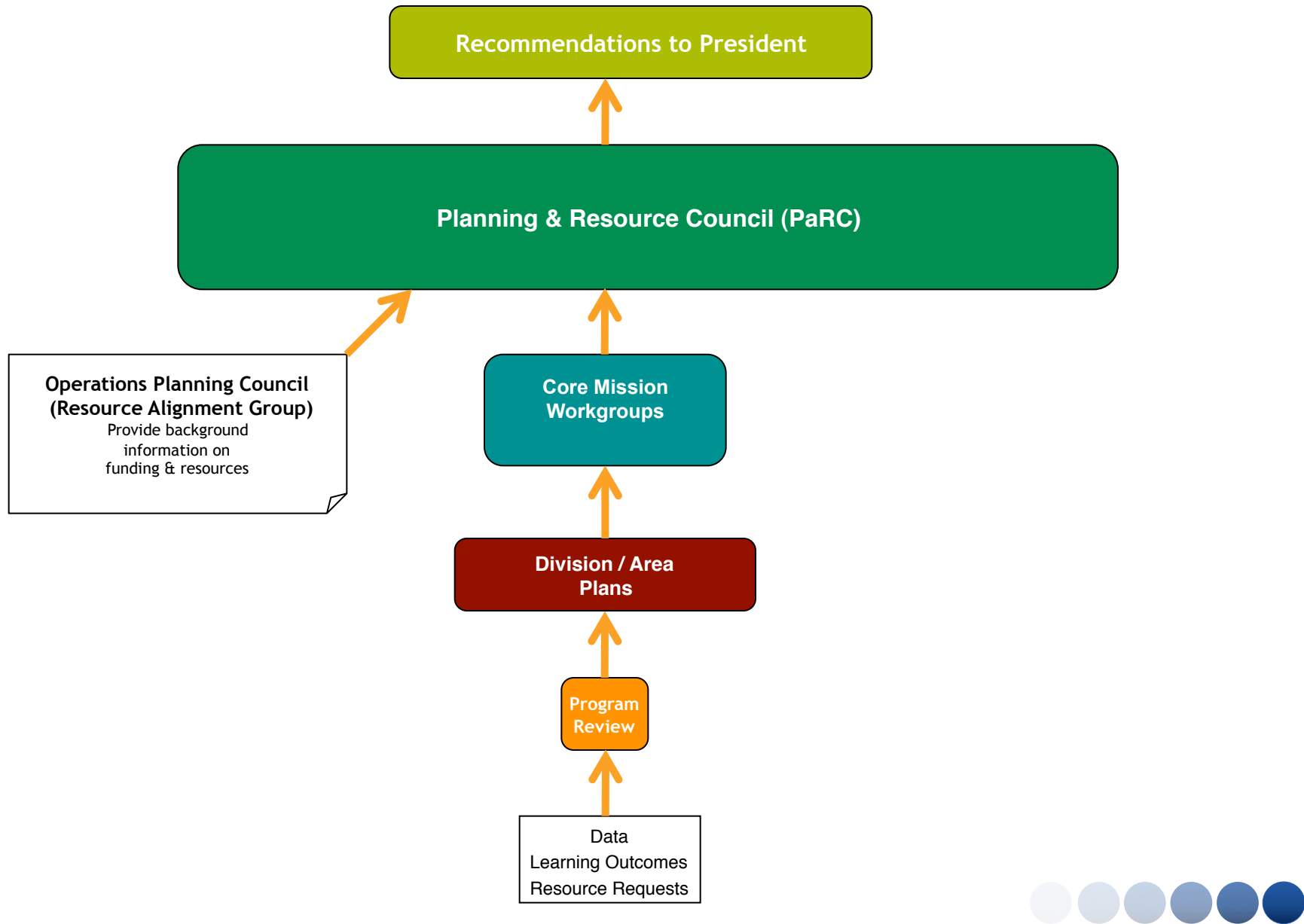
Participatory Governance Integrated Planning & Budget Structural Elements

Revision Date: 08/05/09



Participatory Governance

Simplified Integrated Planning & Budget Structure



Educational and Strategic Master Plan version 2.0



Planning and Resource Council - PaRC

19 voting members and 13 *ex officio* members

- **Chairs (3):**

- **College President**

- **Academic Senate President**

- **Classified Senate President**

- **Members (16):**

- **Assoc. Students of Foothill (ASFC) President (1)**

- **ASFC Student Trustee (1)**

- **ASFC Student Members (2)**

- **Core Mission Workgroup/Operational Budget Planning Chairs (12)**

- **Classified (4); Faculty (4); Deans/Directors (4)**

- **Ex Officio Members (13):**

- **ACE (1)**

- **CSEA (1)**

- **FA (1)**

- **Teamsters (1)**

- **Operating Engineers (1)**

- **MSA (1)**

- **Cabinet (6)**



